

WE START  
WHERE  
THE ROAD  
ENDS



**CONSTRUCTION  
TIRES & TRACKS  
DATABOOK 2016**

# GENERAL REFERENCE DATA

## LOAD INDEX EQUIVALENCES in kg and lb

LI	kg	lb	LI	kg	lb	LI	kg	lb	LI	kg	lb	LI	kg	lb	LI	kg	lb
100	800	1,764	121	1,450	3,200	142	2,650	5,840	160	4,500	9,920	181	8,250	18,190	202	15,000	33,070
101	825	1,819	122	1,500	3,310	143	2,725	6,010	161	4,625	10,200	182	8,500	18,740	203	15,500	34,180
102	850	1,874	123	1,550	3,420	144	2,800	6,170	162	4,750	10,470	183	8,750	19,290	204	16,000	35,280
103	875	1,929	124	1,600	3,530	145	2,900	6,390	163	4,875	10,750	184	9,000	19,840	205	16,500	36,380
104	900	1,985	125	1,650	3,640	146	3,000	6,610	164	5,000	11,020	185	9,250	20,390	206	17,000	37,480
105	925	2,040	126	1,700	3,750	147	3,075	6,780	165	5,150	11,350	186	9,500	20,940	207	17,500	38,590
106	950	2,095	127	1,750	3,860	148	3,150	6,950	166	5,300	11,690	187	9,750	21,500	208	18,000	39,690
110	1,060	2,337	128	1,800	3,970	149	3,250	7,170	170	6,000	13,230	188	10,000	22,050	209	18,500	40,790
111	1,090	2,403	129	1,850	4,080	150	3,350	7,390	171	6,150	13,560	189	10,300	22,710	210	19,000	41,890
112	1,120	2,470	130	1,900	4,190	151	3,450	7,610	172	6,300	13,890	190	10,600	23,370	211	19,500	43,000
113	1,150	2,536	131	1,950	4,300	152	3,550	7,830	173	6,500	14,330	191	10,900	24,030	212	20,000	44,100
114	1,180	2,602	132	2,000	4,410	153	3,650	8,050	174	6,700	14,770	192	11,200	24,690	213	20,600	45,420
115	1,215	2,679	133	2,060	4,540	154	3,750	8,270	175	6,900	15,210	193	11,500	25,360	214	21,200	46,750
116	1,250	2,756	134	2,120	4,670	155	3,875	8,540	176	7,100	15,650	194	11,800	26,020	215	21,800	48,070
117	1,285	2,833	135	2,180	4,810	156	4,000	8,820	177	7,300	16,090	195	12,150	26,790	216	22,400	49,390
118	1,320	2,911	136	2,240	4,940	157	4,125	9,090	178	7,500	16,530	196	12,500	27,560	217	23,000	50,700
119	1,360	2,999	140	2,500	5,510	158	4,250	9,370	179	7,750	17,090	200	14,000	30,870	218	23,600	52,040
120	1,400	3,090	141	2,575	5,680	159	4,375	9,650	180	8,000	17,640	201	14,500	31,970	219	24,300	53,580

## INFLATION UNITS

Kpa	Bar	Psi	kg/cm <sup>2</sup>
100	1	14.5	1.0
150	1.5	22	1.5
200	2	29	2
250	2.5	36	2.6
300	3	44	3.1
350	3.5	51	3.6
400	4	58	4.1
450	4.5	65	4.6
500	5	73	5.1
550	5.5	80	5.6
600	6	87	6.1
650	6.5	94	6.6
700	7	102	7.1
750	7.5	109	7.7
800	8	116	8.2
850	8.5	123	8.7
900	9	131	9.2
950	9.5	138	9.7
1000	10	145	10.2
1050	10.5	152	10.7

## SPEED INDEX

Speed km/h	Speed index
5	A1
10	A2
15	A3
20	A4
25	A5
40	A8
50	B

# TABLE OF CONTENTS

## SKID STEER LOADERS

CAMSO SKS 775	4
CAMSO SKS 753	5
CAMSO SKS 732	6
CAMSO SKS 532	7
CAMSO SKS 793S	8
CAMSO HAULER SKZ	9
CAMSO SKS 792S <i>formerly Solideal SolidAir SKS</i>	10
CAMSO SKS 796S <i>formerly Solideal SolidAir SM</i>	11
CAMSO HAULER SKS	12
CAMSO XTRA WALL	14
CAMSO SKS 774 <i>formerly Solideal Hauler XD44</i>	16
CAMSO SKS 332 <i>formerly Solideal Gripper</i>	17
CAMSO SKS 782S <i>formerly Solideal Safetymaster SKS</i>	17
CAMSO SKS 786S <i>formerly Solideal Safetymaster SM</i>	19

## BACKHOE LOADERS

CAMSO BHL 753 <i>formerly Solideal BHZ</i>	20
CAMSO SL R4	21
CAMSO BHL 532 <i>formerly Solideal SLA R4</i>	23
CAMSO 4L R1	24
CAMSO BHL 530 <i>formerly Solideal MR F3</i>	26

## TELEHANDLERS

CAMSO TLH 792S <i>formerly Solideal SolidAir TLH</i>	27
CAMSO SL G3	28
CAMSO SL G2	30
CAMSO TLH 532 <i>formerly Solideal TH2</i>	32
CAMSO TM R4	34
CAMSO 4L I3	35

## WHEEL LOADERS | ARTICULATED DUMP TRUCKS MOTOR GRADERS

CAMSO WHL 753R <i>formerly Solideal SRGP</i>	36
CAMSO WHL 775R <i>formerly Solideal SRLD</i>	38
CAMSO WHL 776R <i>formerly Solideal SRLS</i>	40
CAMSO ADT 753R <i>formerly Solideal SRAT</i>	42
CAMSO WHL 775	44
CAMSO LM L3	46
CAMSO LM L2	50
CAMSO WHL 773 <i>formerly Solideal RM L3</i>	54
CAMSO SKZ	56

## WHEEL EXCAVATORS

CAMSO WL	58
CAMSO WEX 552 <i>formerly Solideal WEX</i>	60

## COMPACTION EQUIPMENT

CAMSO CMP 533	62
CAMSO CMP 576 <i>formerly Solideal SM C1</i>	63

## TRUCK MOUNTED FORKLIFTS

CAMSO SKS 511 <i>formerly Solideal SKS R1</i>	64
---	----

## MINI-EXCAVATORS

CAMSO MEX HXD	66
CAMSO MEX SD	68

## COMPACT TRACK LOADERS

CAMSO CTL HXD	70
CAMSO CTL SD	71

## MULTI-TERRAIN LOADERS

CAMSO MTL HXD	72
---------------	----

## OTT FOR SKID STEER LOADERS

CAMSO OTT HXD	73
---------------	----

## PAVERS

CAMSO HXD SMOOTH	74
CAMSO HXD CHEVRON	75

## CARRIERS

CAMSO CARRIER HXD	76
-------------------	----

COMPLETE LINE OVERVIEW	78
------------------------	----



# CAMSO SKS 775

## THE VERSATILE HEAVY-DUTY CHOICE

### FEATURES

- Massive 50/32 tread depth with high lug-to-void ratio
- Innovative tread pattern
- New impact guard sidewall design
- Hauler stepped shoulder lugs

### BENEFITS

- Maximizes tire life and tread impact resistance
- Optimizes traction and versatility for mixed and hard surface applications
- Deflects debris to better protect sidewalls and reduce stress cracking
- Provides lower cost per hour and quicker installation

### PERFORMANCE

#### TIRE LIFE



#### PUNCTURE RESISTANCE



#### TRACTION



TIRE SIZE	PR	RIM SIZE		ACTUAL TIRE DIMENSIONS [mm] [inches]						TT/ TBLS	LOAD INDEX	SPEED SYMBOL	TRA CODE	INFLATION PRESSURE [bar] [PSI]	MAXIMUM TIRE LOAD [kg] [lb]			
		Recommended	Alternative	O.D.	O.W.	O.T.D. [mm] [32nd]	M.D.S.	S.L.R.	R.C.						Static	Creep	8 km/h	16 km/h
10-16.5 (265/70-16.5)	10	8.25	-	778	269	40.0	-	-	-	TBLS	134	A2	L-5	5.25	3380	2460	2140	1690
				30.6	10.6	50	-	-	-					75	7450	5450	4700	3750
12-16.5 (305/70-16.5)	12	9.75	-	833	307	40.0	-	-	-	TBLS	145	A2	L-5	5.60	4550	3310	2880	2280
				32.8	12.1	50	-	-	-					80	10050	7300	6350	5050



# CAMSO SKS 753

## VERSATILITY AND DURABILITY

### FEATURES

- Innovative non-directional tread pattern
- High lug-to-void ratio
- New impact guard sidewall design
- Stepped shoulder lugs

### BENEFITS

- Optimizes durability and versatility on mixed and hard surfaces
- Provides excellent wear and puncture resistance
- Deflects debris to better protect sidewalls and reduce stress cracking
- Enhance tread cleanout and traction in softer surfaces

### PERFORMANCE

#### TIRE LIFE



#### PUNCTURE RESISTANCE



#### TRACTION



TIRE SIZE	PR	RIM SIZE		ACTUAL TIRE DIMENSIONS [mm] [inches]						TL/TT	LOAD INDEX	SPEED SYMBOL	TRA CODE	INFLATION PRESSURE [bar] [PSI]	MAXIMUM TIRE LOAD [kg] [lb]			
		Recommended	Alternative	O.D.	O.W.	O.T.D. [mm] [32nd]	M.D.S.	S.L.R.	R.C.						Static	10 km/h	15 km/h	30 km/h
10-16.5	10	8.25	-	791	268	29	-	367	2386	TL	-	-	-	5,20	3375	2135	1685	1450
				31,1	10,6	37	-	14,4	93,9					75	7440	4710	3720	3205
12-16.5	12	9.75	-	837	326	29	-	388	2496	TL	-	-	-	5,50	4525	2865	2265	1950
				33,0	12,8	37	-	15,3	98,3					80	9985	6320	4995	4300
14-17.5 (355/70-17.5)	14	10.50	-	950	357	40	-	436	2861	TL	-	-	-	5,50	6125	3875	3060	2635
				37,4	14,1	50	-	17,2	112,6					80	13495	8540	6745	5805



# CAMSO SKS 732

## THE ULTIMATE OFF-ROAD SKID STEER TIRE SOLUTION

### FEATURES

- Massive tread depth with optimized lug-to-void ratio
- New impact guard sidewall design
- New wraparound hauler steps
- Innovative curved and tapered tread lugs

### BENEFITS

- Maximizes off-road durability and traction
- Deflects debris to better protect sidewalls and reduce stress cracking
- Maximizes tread cleanout for best off-road traction
- Enhances traction and ensures even wearing

### PERFORMANCE

#### TIRE LIFE



#### PUNCTURE RESISTANCE



#### TRACTION



TIRE SIZE	PR	RIM SIZE		ACTUAL TIRE DIMENSIONS [mm] [Inches]						TT/ TBLS	LOAD INDEX	SPEED SYMBOL	TRA CODE	INFLATION PRESSURE [bar] [PSI]	MAXIMUM TIRE LOAD [kg] [lb]			
		Recommended	Alternative	O.D.	O.W.	O.T.D. [mm] [32nd]	M.D.S.	S.L.R.	R.C.						Static	Creep	8 km/h	16 km/h
10-16.5 (265/70-16.5)	8	8.25	-	777	265	23.0	-	-	-	TBLS	129	A2	R-4	4.20	2960	2160	1875	1480
				30.6	10.4	29	-	-	-					60	6550	4750	4150	3250
10-16.5 (265/70-16.5)	10	8.25	-	777	265	23.0	-	-	-	TBLS	134	A2	R-4	5.25	3380	2460	2140	1690
				30.6	10.4	29	-	-	-					75	7450	5450	4700	3750
12-16.5 (305/70-16.5)	10	9.75	-	836	330	25.0	357	585	2520	TBLS	140	A2	R-4	4.50	4020	2930	2545	2010
				32.9	13.0	31	14.0	23.0	99.2					64	8850	6450	5600	4450
12-16.5 (305/70-16.5)	12	9.75	-	833	325	27	358	381	2516	TBLS	145	A2	R-4	5.60	4550	3310	2880	2280
				32.5	12.6	23	14.1	15.0	99.1					80	10050	7300	6350	5050
14-17.5 (355/70-17.5)	14	10.50	-	930	370	32.0	-	-	-	TBLS	155	A2	R-4	5.60	6120	4460	3875	3060
				36.6	14.6	40	-	-	-					80	13500	9850	8550	6750



# CAMSO SKS 532

## BEST GENERAL DUTY SOLUTION

### FEATURES

- Extra-deep tread depth with curved tread lugs
- Self cleaning stepped tread
- Impact guard sidewall design
- Void guard tread impact protection

### BENEFITS

- Ensures great durability and extra traction
- Maximizes cleanout for improved off-road traction
- Deflects debris to better protect sidewalls and reduce stress cracking
- Protects from tread punctures to minimize flat tires

### PERFORMANCE

#### TIRE LIFE



#### PUNCTURE RESISTANCE



#### TRACTION



TIRE SIZE	PR	RIM SIZE		ACTUAL TIRE DIMENSIONS [mm] [Inches]						TL/TT	LOAD INDEX	SPEED SYMBOL	TRA CODE	INFLATION PRESSURE [bar] [PSI]	MAXIMUM TIRE LOAD [kg] [lb]			
		Recommended	Alternative	O.D.	O.W.	O.T.D. [mm] [32nd]	M.D.S.	S.L.R.	R.C.						Static	10 km/h	15 km/h	30 km/h
10-16.5	10	8.25	-	768	278	18	-	356	2316	TL	-	-	-	5,20	3375	2135	1685	1450
				30,2	10,9	23	-	14,0	91,2					75	7440	4710	3720	3205
12-16.5	12	9.75	-	831	330	19	-	383	2513	TL	-	-	-	5,50	4525	2865	2265	1950
				32,7	13,0	24	-	15,1	98,9					80	9985	6320	4995	4300
14-17.5 (355/70-17.5)	14	10.50	-	925	351	24	-	423	2789	TL	-	-	-	5,50	6125	3875	3060	2635
				36,4	13,8	30	-	16,7	109,8					80	13495	8540	6745	5805



# CAMSO SKS 793S

## SEVERE-DUTY AND FLAT-FREE

### FEATURES

- Innovative non-directional tread pattern
- New elongated aperture design
- Massive tread depth
- Reusable wheel

### BENEFITS

- Provides greater durability and versatility for mixed and hard surface applications
- Provides excellent ride quality and reduces cracking
- Improves durability for longer service life
- Provides lower cost per hour and quicker installation

### PERFORMANCE

#### TIRE LIFE



#### PUNCTURE RESISTANCE



#### TRACTION



TIRE SIZE	RIM SIZE	ACTUAL TIRE DIMENSIONS [mm] [inches]						HEEL		LOAD CAPACITY [kg] [lb]						
										COUNTERBALANCED LIFT TRUCKS			OTHER VEHICLES			STATIC
		O.D.	O.W.	O.T.D. [mm] [32nd]	M.D.S.	S.L.R.	R.C.	NORMAL	QUICK	LOAD WHEEL		STEERING WHEEL				
										15 km/h 9 mph	25 km/h 16 mph	25 km/h 16 mph	6 km/h 4 mph	10 km/h 6 mph	25 km/h 16 mph	0 km/h 0 mph
31x10-20 (10-16.5)	7.50	780	233	39	253	372	2451	-	■	-	4030	3100	4030	3660	3100	4680
		30.7	9.2	49	10.0	14.6	96.5	-	■	-	8885	6835	8900	8100	6850	10350
33x12-20 (12-16.5)	7.50	830	285	39	310	391	2503	-	■	-	5200	4000	5200	4720	4000	6040
		32.7	11.2	50	12.2	15.4	98.5	-	■	-	11465	8820	11500	10400	8850	13350
36x14-20 (14-17.5)	7.50	910	322	52	359	424	2858	-	■	-	6175	4750	6175	5605	4750	7175
		35.8	12.7	66	14.1	16.7	112.5	-	■	-	13650	10500	13650	12350	10500	15850



# CAMSO HAULER SKZ

## OFF-ROAD TRACTION AND DURABILITY

### FEATURES

- Non-directional extra deep tread
- Large footprint with massive lug-to-void ratio
- Versatile tread pattern
- Wide sidewall

### BENEFITS

- Improves tread life and resistance to punctures
- Provides excellent durability and even tread wearing
- Optimizes traction and handling on mixed and hard surfaces
- Provides superior side impact resistance

### PERFORMANCE

#### TIRE LIFE



#### PUNCTURE RESISTANCE



#### TRACTION



TIRE SIZE	PR	RIM SIZE		ACTUAL TIRE DIMENSIONS [mm] [inches]						TT/TBLS	LOAD INDEX	SPEED SYMBOL	TRA CODE	INFLATION PRESSURE [bar] [PSI]	MAXIMUM TIRE LOAD [kg] [lb]			
		Recommended	Alternative	O.D.	O.W.	O.T.D. [mm] [32nd]	M.D.S.	S.L.R.	R.C.						Static	Creep	8 km/h	16 km/h
10-16.5	10	8.25	-	786	275	31.0	295	364	2335	TBLS	134	A2	L-4	5.25	3380	2460	2140	1690
				30.9	10.8	39	11.6	14.3	91.9					75	7450	5450	4700	3750
12-16.5	12	9.75	-	831	321	35.0	344	384	2483	TBLS	145	A2	L-4	5.60	4550	3310	2880	2280
				32.7	12.6	44	13.5	15.1	97.8					80	10050	7300	6350	5050
14-17.5	14	10.50	-	932	352	45.0	382	426	2733	TBLS	155	A2	L-4	5.60	6120	4460	3875	3060
				36.7	13.9	57	15.0	16.8	107.6					80	13500	9850	8550	6750
31x15.5-15	8	13.00	13LB	777	384	24.0	24.0	24.0	2304	TBLS	126	A2	L-4	3.10	2670	1940	1690	1340
				30.6	15.1	30	0.9	0.9	90.7					44	5900	4300	3750	2950
33x15.5-16.5	14	12.00	-	836	380	35.0	414	384	2446	TBLS	148	A2	L-4	4.90	4980	3620	3150	2490
				32.9	15.0	44	16.3	15.1	96.3					70	11000	8000	6950	5500



# CAMSO SKS 792S

Formerly Solideal SolidAir SKS

## FLAT-PROOF DURABILITY MEETS OFF-ROAD TRACTION

### FEATURES

- FEA-validated aperture design
- Hauler stepped tread design
- Reusable wheel

### BENEFITS

- Improves ride quality and reduces cracking
- Provides excellent cleanout for improved off-road traction
- Provides lower cost per hour and quicker installation

### PERFORMANCE

#### TIRE LIFE



#### PUNCTURE RESISTANCE



#### TRACTION



TIRE SIZE	RIM SIZE	ACTUAL TIRE DIMENSIONS [mm] [inches]						HEEL		LOAD CAPACITY [kg] [lb]							
										COUNTERBALANCED LIFT TRUCKS				OTHER VEHICLES			STATIC
										LOAD WHEEL		STEERING WHEEL					
		O.D.	O.W.	O.T.D. [mm] [32nd]	M.D.S.	S.L.R.	R.C.	NORMAL	QUICK	15 km/h 9 mph	25 km/h 16 mph	25 km/h 16 mph	6 km/h 4 mph	10 km/h 6 mph	25 km/h 16 mph	0 km/h 0 mph	
31x10-20 (10-16.5)	7.50	781	237	33	260	372	2522	-	■	-	4030	3100	4030	3660	3100	4680	
		30.7	9.3	42	10.2	14.6	99.3	-	■	-	8885	6835	8900	8100	6850	10350	
33x12-20 (12-16.5)	7.50	831	287	40	326	388	2669	-	■	-	5200	4000	5200	4720	4000	6040	
		32.7	11.3	50	12.8	15.3	105.1	-	■	-	11465	8820	11500	10400	8850	13350	
36x14-20 (14-17.5)	7.50	910	320	43	345	426	2860	-	■	-	6175	4750	6175	5605	4750	7175	
		35.8	12.6	54	13.6	16.8	112.6	-	■	-	13650	10500	13650	12350	10500	15850	



# CAMSO SKS 796S

Formerly Solideal SolidAir SM

## HARD SURFACE SOLID TIRE SOLUTION

### FEATURES

- FEA-validated aperture design
- Full-width footprint
- Reusable wheel

### BENEFITS

- Improves ride quality and reduces cracking
- Provides excellent stability and tread life
- Provides lower cost per hour and quicker installation

### PERFORMANCE

#### TIRE LIFE



#### PUNCTURE RESISTANCE



#### TRACTION



TIRE SIZE	RIM SIZE	ACTUAL TIRE DIMENSIONS [mm] [inches]						HEEL		LOAD CAPACITY [kg] [lb]							
										COUNTERBALANCED LIFT TRUCKS				OTHER VEHICLES			STATIC
										LOAD WHEEL		STEERING WHEEL					
		O.D.	O.W.	O.T.D. [mm] [32nd]	M.D.S.	S.L.R.	R.C.	NORMAL	QUICK	15 km/h 9 mph	25 km/h 16 mph	25 km/h 16 mph	6 km/h 4 mph	10 km/h 6 mph	25 km/h 16 mph	0 km/h 0 mph	
31x10-20 (10-16.5)	7.50	781	237	33	260	372	2522	-	■	-	4030	3100	4030	3660	3100	4680	
		30.7	9.3	42	10.2	14.6	99.3	-	■	-	8885	6835	8900	8100	6850	10350	
33x12-20 (12-16.5)	7.50	831	287	40	326	388	2669	-	■	-	5200	4000	5200	4720	4000	6040	
		32.7	11.3	50	12.8	15.3	105.1	-	■	-	11465	8820	11500	10400	8850	13350	
36x14-20 (14-17.5)	7.50	909	326	43	360	425	2873	-	■	-	6175	4750	6175	5605	4750	7175	
		35.8	12.8	54	14.2	16.7	113.1	-	■	-	13650	10500	13650	12350	10500	15850	



# CAMSO HAULER SKS

## VERSATILE DURABILITY ON MIXED SURFACES

### FEATURES

- Extra-wide, deep lug design
- Hauler stepped tread design
- Reinforced sidewall
- Undertread protection

### BENEFITS

- Provides excellent durability and traction in off-road conditions
- Provides excellent cleanout for improved traction
- Provides improved side impact resistance
- Improves tread impact resistance for fewer flat tires

### PERFORMANCE

#### TIRE LIFE



#### PUNCTURE RESISTANCE



#### TRACTION



TIRE SIZE	PR	RIM SIZE		ACTUAL TIRE DIMENSIONS [mm] [inches]						TT/TBLS	LOAD INDEX	SPEED SYMBOL	TRA CODE	INFLATION PRESSURE [bar] [PSI]	MAXIMUM TIRE LOAD [kg] [lb]			
		Recommended	Alternative	O.D.	O.W.	O.T.D. [mm] [32nd]	M.D.S.	S.L.R.	R.C.						Static	Creep	8 km/h	16 km/h
5.70-12	6	4.50I	5JA	585	157	12.0	-	275	1746	TBLS	93	A2	R4	4.20	1040	760	660	520
				23.0	6.2	15	0.0	10.8	68.7						60	2300	1700	1450
23x8.5-12	6	7.00I	7JA	578	210	12.5	-	261	1725	TBLS	101	A2	R4	3.50	1300	950	825	650
				22.8	8.3	16	0.0	10.3	67.9						50	2850	2100	1800
23x8.5-12	12	7.00I	7JA	578	218	12.5	233	286	1725	TBLS	115	A2	R4	7.00	1950	1420	1235	980
				22.8	8.6	16	9.2	11.3	67.9						100	4300	3150	2750
27x8.5-15 (215/70-15)	6	7JA	6.5K/7J	680	210	13.0	-	316	2029	TBLS	112	A2	R4	3.10	1780	1290	1125	890
				26.8	8.3	16	0.0	12.4	79.9						44	3950	2850	2500
27x10.5-15	8	8.50	8LB/8W	700	252	19.5	269	333	2120	TBLS	120	A2	R4	4.10	2200	1600	1390	1100
				27.6	9.9	25	10.6	13.1	83.5						59	4850	3550	3050
31x15.5-15	8	13.00	13LB	782	385	24.0	405	366	2334	TBLS	126	A2	R4	3.10	2670	1940	1690	1340
				30.8	15.2	30	15.9	14.4	91.9						44	5900	4300	3750
31x15.5-15	12	13.00	13LB	780	384	24.0	403	362	2353	TBLS	136	A2	R4	5.25	3520	2560	2230	1760
				30.7	15.1	30	15.9	14.3	92.6						75	7750	5650	4900
10-16.5	8	8.25	-	784	275	16.5	293	361	2340	TBLS	129	A2	R4	4.20	2960	2160	1875	1480
				30.9	10.8	21	11.5	14.2	92.1						60	6550	4750	4150
10-16.5 (265/70-16.5)	10	8.25	-	790	275	16.5	297	364	2358	TBLS	134	A2	R4	5.25	3380	2460	2140	1690
				31.1	10.8	21	11.7	14.3	92.8						75	7450	5450	4700
31.5x13-16.5	10	9.75	-	787	311	18.0	333	361	2364	TBLS	139	A2	R4	4.90	3850	2800	2435	1920
				31.0	12.2	23	13.1	14.2	93.1						70	8500	6200	5400
12-16.5 (305/70-16.5)	10	9.75	-	830	325	20.3	359	385	2511	TBLS	140	A2	R4	4.50	4020	2930	2545	2010
				32.7	12.8	26	14.1	15.2	98.9						64	8850	6450	5600
33x15.5-16.5	12	12.00	-	829	386	20.0	381	2485	2364	TBLS	145	A2	R4	4.10	4580	3340	2900	2290
				32.6	15.2	25	15.0	97.8	93.1						59	10100	7350	6400
14-17.5	14	10.50	-	932	352	27.0	427	2802	2511	TBLS	155	A2	R4	5.60	6120	4460	3875	3060
				36.7	13.9	34	16.8	110.3	98.9						80	13500	9850	8550



# CAMSO HAULER SKS (cont.)

TIRE SIZE	PR	RIM SIZE		ACTUAL TIRE DIMENSIONS [mm] [inches]						TT/TBLS	LOAD INDEX	SPEED SYMBOL	TRA CODE	INFLATION PRESSURE [bar] [PSI]	MAXIMUM TIRE LOAD [kg] [lb]			
		Recommended	Alternative	O.D.	O.W.	O.T.D. [mm] [32nd]	M.D.S.	S.L.R.	R.C.						Static	Creep	8 km/h	16 km/h
15-19.5	14	11.75	12.25	1020	398	28.0	460	3044	1746	TBLS	164	A2	R4	5.60	8010	5830	5070	4010
				40.2	15.7	35	18.1	119.8	68.7						80	17700	12850	11200
385/65-22.5	12	11.75	12.25	1100	374	28.0	498	3265	1725	TBLS	-	A2	R4	5.00	9090	6610	5750	4540
				43.3	14.7	35	19.6	128.5	67.9						71	20050	14600	12700
385/65-22.5	16	11.75	12.25	1092	382	28.0	495	3591	1725	TBLS	175	A2	R4	7.00	11120	8100	7040	5560
				43.0	15.0	35	19.5	141.4	67.9						100	24550	17900	15550
385/45-28	16	W13x28	-	1086	370	25.5	495	3301	2029	TBLS	176	A2	R4	6.50	11120	8100	7040	5560
				42.8	14.6	32	19.5	130.0	79.9						93	24550	17900	15550
385/45-28	18	W13x28	-	1092	382	25.5	494	3327	2120	TBLS	179	A2	R4	7.50	12140	8840	7685	6070
				43.0	15.0	32	19.4	131.0	83.5						107	26800	19500	16950



# CAMSO XTRA WALL



## BUILT FOR TOUGH OFF-ROAD APPLICATIONS

### FEATURES

- Wide, deep lug design
- Hauler stepped tread design
- Reinforced sidewall
- Rim protector

### BENEFITS

- Provides enhanced durability and traction in off-road conditions
- Provides enhanced cleanout for improved traction
- Provides improved side impact resistance
- Protects wheel from impact damage

### PERFORMANCE

#### TIRE LIFE



#### PUNCTURE RESISTANCE



#### TRACTION



TIRE SIZE	PR	RIM SIZE		ACTUAL TIRE DIMENSIONS [mm] [inches]						TT/ TBSL	LOAD INDEX	SPEED SYMBOL	TRA CODE	INFLATION PRESSURE [bar] [PSI]	MAXIMUM TIRE LOAD [kg] [lb]			
		Recommended	Alternative	O.D.	O.W.	O.T.D. [mm] [32nd]	M.D.S.	S.L.R.	R.C.						Static	Creep	8 km/h	16 km/h
5.70-12	6	4.50I	5JA	566	152	13.0	162	266	1689	TBLS	93	A2	R4	4.20	1040	760	660	520
				22.3	6.0	16	6.4	10.5	66.5						60	2300	1700	1450
23x8.5-12	6	7.00I	7JA	572	213	14.5	228	256	1723	TBLS	101	A2	R4	3.50	1300	950	825	650
				22.5	8.4	18	9.0	10.1	67.8						50	2850	2100	1800
23x8.5-12	12	7.00I	7JA	586	231	14.5	-	275	1749	TBLS	115	A2	R4	7.00	1950	1420	1235	980
				23.1	9.1	18	-	10.8	68.9						100	4300	3150	2750
26x12-12	10	10.50	8.50/8.50JA	655	297	21.5	-	297	1955	TBLS	124	A2	R-4	4.50	2580	1870	1630	1290
				25.8	11.7	27	-	11.7	77.0						64	5700	4150	3600
27x10-12	14	8.00G	-	700	265	19.0	288	316	2111	TT	132	A2	R-4	7.00	4640	4080	3545	2800
				27.6	10.4	24	11.3	12.4	83.1						100	10250	9000	7850
7.00-15	6	5.50	6LB	775	222	16.0	246	361	2359	TBLS	121	A2	R-4	4.10	2280	1660	1440	1140
				30.5	8.7	20	9.7	14.2	92.9						59	5050	3650	3200
27x8.5-15	6	7JA	6.5K/7J	679	213	15.0	245	309	2026	TBLS	112	A2	R-4	3.10	1780	1290	1125	890
				26.7	8.4	19	9.6	12.2	79.8						44	3950	2850	2500
31x15.5-15	8	13.00	13LB	788	384	24.0	401	365	2352	TBLS	126	A2	R-4	3.10	2670	1940	1690	1340
				31.0	15.1	30	15.8	14.4	92.6						44	5900	4300	3750
26x12-16.5 (300/40-16.5)	10	9.75	-	663	283	23.5	295	303	1986	TBLS	124	A2	R-4	4.00	2580	1870	1630	1290
				26.1	11.1	30	11.6	11.9	78.2						57	5700	4150	3600
10-16.5	6	8.25	-	763	275	17.5	296	349	2277	TBLS	124	A2	R-4	3.15	2510	1830	1590	1260
				30.0	10.8	22	11.7	13.7	89.6						45	5550	4050	3500
10-16.5	8	8.25	-	763	275	17.5	293	349	2277	TBLS	129	A2	R-4	4.20	2960	2160	1875	1480
				30.0	10.8	22	11.5	13.7	89.6						60	6550	4750	4150
10-16.5	10	8.25	-	765	276	17.5	-	348	2306	TBLS	134	A2	R-4	5.25	3380	2460	2140	1690
				30.1	10.9	22	-	13.7	90.8						75	7450	5450	4700
12-16.5	8	9.75	-	826	319	18.0	355	372	2465	TBLS	135	A2	R-4	3.50	3440	2510	2180	1720
				32.5	12.6	23	14.0	14.6	97.0						50	7600	5550	4800

# CAMSO XTRA WALL (cont.)



TIRE SIZE	PR	RIM SIZE		ACTUAL TIRE DIMENSIONS [mm] [inches]						TT/ TBSL	LOAD INDEX	SPEED SYMBOL	TRA CODE	INFLATION PRESSURE [bar] [PSI]	MAXIMUM TIRE LOAD [kg] [lb]			
		Recommended	Alternative	O.D.	O.W.	O.T.D. [mm] [32nd]	M.D.S.	S.L.R.	R.C.						Static	Creep	8 km/h	16 km/h
12-16.5	10	9.75	-	820	318	18.0	349	369	2479	TBLS	140	A2	R-4	4.50	4020	2930	2545	2010
				32.3	12.5	23	13.7	14.5	97.6						64	8850	6450	5600
12-16.5	12	9.75	-	824	321	18.0	358	372	2459	TBLS	145	A2	R-4	5.60	4550	3310	2880	2280
				32.4	12.6	23	14.1	14.6	96.8						80	10050	7300	6350
14-17.5	12	10.50	-	912	351	31.0	397	417	2746	TBLS	152	A2	R-4	4.80	5610	4080	3550	2800
				35.9	13.8	39	15.6	16.4	108.1						69	12400	9000	7850



# CAMSO SKS 774

Formerly Solideal Hauler XD44

## A TOUGH L5 HARD SURFACES TIRE

### FEATURES

- Extra-deep L5 tread
- 80% lug-to-void ratio
- Reinforced sidewall

### BENEFITS

- Provides excellent tire life and tread impact resistance
- Provides excellent durability protection against tread impacts
- Provides improved side impact resistance

### PERFORMANCE

#### TIRE LIFE



#### PUNCTURE RESISTANCE



#### TRACTION



TIRE SIZE	PR	RIM SIZE		ACTUAL TIRE DIMENSIONS [mm] [inches]						TT/ TBLS	LOAD INDEX	SPEED SYMBOL	TRA CODE	INFLATION PRESSURE [bar] [PSI]	MAXIMUM TIRE LOAD [kg] [lb]			
		Recommended	Alternative	O.D.	O.W.	O.T.D. [mm] [32nd]	M.D.S.	S.L.R.	R.C.						Static	Creep	8 km/h	16 km/h
10-16.5	10	8.25	-	786	272	35.0	299	366	2393	TBLS	134	A2	L-5	5.25	3380	2460	2140	1690
				30.9	10.7	44	11.8	14.4	94.2					75	7450	5450	4700	3750
12-16.5	12	9.75	-	833	323	35.0	392	392	2542	TBLS	145	A2	L-5	5.60	4550	3310	2880	2280
				32.8	12.7	44	15.4	15.4	100.1					80	10050	7300	6350	5050



# CAMSO SKS 332

Formerly Solideal Gripper

## RELIABLE PERFORMANCE AND QUALITY

### FEATURES

- Deep lug design
- Lower lug-to-void ratio
- Premium rubber compounds

### BENEFITS

- Provides good durability and traction in light-duty conditions
- Provides good traction in off-road conditions
- Provides good chunk and tear resistance

### PERFORMANCE

#### TIRE LIFE



#### PUNCTURE RESISTANCE



#### TRACTION



TIRE SIZE	PR	RIM SIZE		ACTUAL TIRE DIMENSIONS [mm] [inches]						TT/ TBLS	LOAD INDEX	SPEED SYMBOL	TRA CODE	INFLATION PRESSURE [bar] [PSI]	MAXIMUM TIRE LOAD [kg] [lb]			
		Recommended	Alternative	O.D.	O.W.	O.T.D. [mm] [32nd]	M.D.S.	S.L.R.	R.C.						Static	Creep	8 km/h	16 km/h
10-16.5	8	8.25	-	764	275	15.0	304	346	2313	TBLS	129	A2	R-4	4.20	2960	2160	1875	1480
				30.1	10.8	19	12.0	13.6	91.1					60	6550	4750	4150	3250
12-16.5	10	9.75	-	819	318	18.0	348	370	2521	TBLS	140	A2	R-4	4.50	4020	2930	2545	2010
				32.2	12.5	23	13.7	14.6	99.3					64	8850	6450	5600	4450



# CAMSO SKS 782S

Formerly Solideal Safetymaster SKS

## SOLID OFF-ROAD TRACTION

### FEATURES

- Full solid construction
- Hauler stepped tread design
- Reusable wheel

### BENEFITS

- Provides excellent durability and flat-free operation
- Provides excellent cleantout for improved off-road traction
- Provides lower cost per hour and quicker installation

### PERFORMANCE

#### TIRE LIFE



#### PUNCTURE RESISTANCE



#### TRACTION



TIRE SIZE	RIM SIZE	ACTUAL TIRE DIMENSIONS [mm] [inches]						HEEL		LOAD CAPACITY [kg] [lb]							
										COUNTERBALANCED LIFT TRUCKS				OTHER VEHICLES			STATIC
										LOAD WHEEL		STEERING WHEEL					
		O.D.	O.W.	O.T.D. [mm] [32nd]	M.D.S.	S.L.R.	R.C.	NORMAL	QUICK	15 km/h 9 mph	25 km/h 16 mph	25 km/h 16 mph	6 km/h 4 mph	10 km/h 6 mph	25 km/h 16 mph	0 km/h 0 mph	
31x10-20	7.50	781	237	33	260	372	2522	-	■	-	4030	3100	4030	3660	3100	4680	
		30.7	9.3	42	10.2	14.6	99.3	-	■	-	8885	6835	8900	8100	6850	10350	
33x12-20	7.50	831	287	40	326	396	2677	-	■	-	5200	4000	5200	4720	4000	6040	
		32.7	11.3	50	12.8	15.6	105.4	-	■	-	11465	8820	11500	10400	8850	13350	
36x14-20	7.50	910	320	43	345	426	2860	-	■	-	6175	4750	6175	5605	4750	7175	
		35.8	12.6	54	13.6	16.8	112.6	-	■	-	13650	10500	13650	12350	10500	15850	



# CAMSO SKS 786S

Formerly Solideal Safetymaster SM

## SOLID HARD SURFACE DURABILITY

### FEATURES

- Full solid construction
- Full-width footprint
- Reusable wheel

### BENEFITS

- Provides excellent durability and flat-free operation
- Provides excellent stability and tread life
- Provides lower cost per hour and quicker installation

### PERFORMANCE

#### TIRE LIFE



#### PUNCTURE RESISTANCE



#### TRACTION



TIRE SIZE	RIM SIZE	ACTUAL TIRE DIMENSIONS [mm] [inches]						HEEL		LOAD CAPACITY [kg] [lb]							
										COUNTERBALANCED LIFT TRUCKS				OTHER VEHICLES			STATIC
										LOAD WHEEL		STEERING WHEEL					
		O.D.	O.W.	O.T.D. [mm] [32nd]	M.D.S.	S.L.R.	R.C.	NORMAL	QUICK	15 km/h 9 mph	25 km/h 16 mph	25 km/h 16 mph	6 km/h 4 mph	10 km/h 6 mph	25 km/h 16 mph	0 km/h 0 mph	
31x10-20	7.50	781	237	33	260	372	2522	-	■	-	4030	3100	4030	3660	3100	4680	
		30.7	9.3	42	10.2	14.6	99.3	-	■	-	8885	6835	8900	8100	6850	10350	
33x12-20	7.50	831	287	40	326	396	2677	-	■	-	5200	4000	5200	4720	4000	6040	
		32.7	11.3	50	12.8	15.6	105.4	-	■	-	11465	8820	11500	10400	8850	13350	
36x14-20	7.50	909	326	43	360	429	2905	-	■	-	6175	4750	6175	5605	4750	7175	
		35.8	12.8	54	14.2	16.9	114.4	-	■	-	13650	10500	13650	12350	10500	15850	



# CAMSO BHL 753

Formerly Solideal BHZ

## DURABILITY MEETS RIDE QUALITY

### FEATURES

- Non-directional tread pattern with high lug-to-void ratio
- Optimized, continuous-contact tread pattern
- Non-directional tread pattern with high lug-to-void ratio
- Tapered tread lugs

### BENEFITS

- Ensures even tread wearing for greater durability
- Significantly reduces vibration for improved ride quality
- Protects against tread impacts and punctures
- Improves lug stability for even wearing

### PERFORMANCE

#### TIRE LIFE



#### PUNCTURE RESISTANCE



#### TRACTION



TIRE SIZE	PR	RIM SIZE		ACTUAL TIRE DIMENSIONS [mm] [inches]						TT/ TBLS	LOAD INDEX	SPEED SYMBOL	TRA CODE	INFLATION PRESSURE [bar] [PSI]	MAXIMUM TIRE LOAD [kg] [lb]			
		Recommended	Alternative	O.D.	O.W.	O.T.D. [mm] [32nd]	M.D.S.	S.L.R.	R.C.						Static	Creep	8 km/h	16 km/h
12-16.5	12	9.75	-	826	319	18	339	378	2489	TBLS	145	A2	R-4	5.60	4550	3310	2880	2280
				32.5	12.6	23	13.4	14.9	98.0					80	10050	7300	6350	5050
12.5/80-18 (320/80-18)	12	W9x18	11x18	984*	310*	24*	343	-	-	TBLS	129	A6	R-4	3.70	4375	-	2410	2240
				38.7	12.2	30	13.5	-	-					53	9650	-	5300	4950
				984*	310*	24*	343	-	-	TBLS	142			3.70	4375	-	3450	3205
				38.7	12.2	30	13.5	-	-					53	9650	-	7600	7100
19.5L-24 (500/70-24)	12	DW16Ax24	W16x24	1316*	503*	25*	-	-	TBLS	151	A8	R-4	2.30	7935	-	5240	4625	
				51.8	19.8	31	-	-					33	17500	-	11550	10200	
				1316*	503*	25*	-	-	TBLS				2.30	7935	-	4450	3900	
				51.8	19.8	31	-	-					33	17500	-	9800	8600	
18.4-26 (480/80-26)	12	W16Lx26	DW16A. W15Lx26	1418*	482*	26*	-	-	TBLS/ TT	156	A8	R-4	2.50	9200	-	5840	5360	
				55.8	19.0	33	0.0	-					-	36	20300	-	12900	11850
				1418*	482*	26*	-	-	TBLS/ TT				2.50	9200	-	4830	4520	
				55.8	19.0	33	0.0	-					-	36	20300	-	10650	10000
16.9-28 (440/80-28)	12	W15Lx28	W14Lx28	1404*	445*	28*	547	-	-	TBLS/ TT	152	A8	R-4	2.60	8165	-	5180	3800
				55.3	17.5	35	21.5	-	-					37	18000	-	11450	8400
				1404*	445*	28*	547	-	-	TBLS/ TT				2.60	8165	-	4290	3690
				55.3	17.5	35	21.5	-	-					37	18000	-	9450	8150



# CAMSO SL R4

## HEAVY-DUTY DURABILITY AND TRACTION

### FEATURES

- Heavy-duty carcass
- Optimized lug-to-void ratio with extra-deep tread
- Hauler stepped tread design

### BENEFITS

- Improves stability and side impact resistance
- Increases tread life and off-road traction
- Improves self-cleaning and stone ejection for excellent traction

### PERFORMANCE

#### TIRE LIFE



#### PUNCTURE RESISTANCE



#### TRACTION



TIRE SIZE	PR	RIM SIZE		ACTUAL TIRE DIMENSIONS [mm] [inches]						TT/ TBLS	LOAD INDEX	SPEED SYMBOL	TRA CODE	INFLATION PRESSURE [bar] [PSI]	MAXIMUM TIRE LOAD [kg] [lb]			
		Recommended	Alternative	O.D.	O.W.	O.T.D. [mm] [32nd]	M.D.S.	S.L.R.	R.C.						Static	Creep	8 km/h	16 km/h
10.5/80-18	10	W9x18	W8x18. 9x18	873.0	282.0	22	283.0	401.0	2550.0	TBLS	119	A6	R-4	4	3220	-	1770	1645
				34.4	11.1	28	11.1	15.8	100.4					53	7100	-	3900	3650
				873.0	282.0	22	283.0	401.0	2550.0	TBLS	131			4	3220	-	2540	2360
				34.4	11.1	28	11.1	15.8	100.4					53	7100	-	5600	5200
12.5/80-18	12	W9x18	11x18	958.0	292.0	27	344.0	423.0	2836.0	TBLS	129	A6	R-4	4	4375	-	2410	2240
				37.7	11.5	34	13.5	16.7	111.7					53	9650	-	5300	4950
				958.0	292.0	27	344.0	423.0	2836.0	TBLS	142			4	4375	-	3450	3205
				37.7	11.5	34	13.5	16.7	111.7					53	9650	-	7600	7100
12.5/80-18	14	W9x18	11x18	950.0	292.0	27	318.0	442.0	2823.0	TBLS	134	A6	R-4	4	4980	-	2760	2565
				37.4	11.5	34	12.5	17.4	111.1					61	11000	-	6100	5650
				950.0	292.0	27	318.0	442.0	2823.0	TBLS	146			4	4980	-	3900	3630
				37.4	11.5	34	12.5	17.4	111.1					61	11000	-	8600	8000
14.9-24	12	W13x24	W11x24. W12x24	1238.0	403.0	30	451.0	555.0	3694.0	TBLS	145	A8	R-4	3	6670	-	4230	3885
				48.7	15.9	38	17.8	21.9	145.4					41	14700	-	9350	8600
				1238.0	403.0	30	451.0	555.0	3694.0	TBLS	3			6670	-	3500	3275	
				48.7	15.9	38	17.8	21.9	145.4		41			14700	-	7750	7250	
16.9-24	12	W15Lx24	W14Lx24	1300.0	444.0	27	495.0	581.0	3846.0	TBLS	149	A8	R-4	2.6	7475	-	4745	4355
				51.2	17.5	34	19.5	22.9	151.4					38	16500	-	10450	9600
				1300.0	444.0	27	495.0	581.0	3846.0	TBLS	2.6			7475	-	3930	3675	
				51.2	17.5	34	19.5	22.9	151.4		38			16500	-	8700	8100	
17.5L-24	10	W15Lx24	W14Lx24	1258.0	445.0	30	502.0	567.0	3716.0	TBLS	144	A8	R-4	2	6440	-	4090	3750
				49.5	17.5	38	19.8	22.3	146.3					31	14200	-	9050	8300
				1258.0	445.0	30	502.0	567.0	3716.0	TBLS	2			6440	-	3380	3165	
				49.5	17.5	38	19.8	22.3	146.3		31			14200	-	7450	7000	
17.5L-24	12	W15Lx24	W14Lx24	1243.0	448.0	28	-	559.0	3728.0	TBLS	149	A8	R-4	3	7475	-	4750	4355
				48.9	17.6	35	-	22.0	146.8					37	16500	-	10500	9600



# CAMSO SL R4 (cont.)

TIRE SIZE	PR	RIM SIZE		ACTUAL TIRE DIMENSIONS [mm] [inches]						TT/ TBS	LOAD INDEX	SPEED SYMBOL	TRA CODE	INFLATION PRESSURE [bar] [PSI]	MAXIMUM TIRE LOAD [kg] [lb]								
		Recommended	Alternative	O.D.	O.W.	O.T.D. [mm] [32nd]	M.D.S.	S.L.R.	R.C.						Static	Creep	8 km/h	16 km/h					
17.5L-24	12	W15Lx24	W14Lx24	1243.0	448.0	28	-	559.0	3728.0	TBS	149	A8	R-4	3	7475	-	3930	3675					
				48.9	17.6	35	-	22.0	146.8						37	16500	-	8700	8100				
19.5L-24	12	DW16Ax24	W16x24	1312.0	485.0	28	536.0	568.0	3895.0	TBS	151	A8	R-4	2	7935	-	5240	4625					
				51.7	19.1	35	21.1	22.4	153.3						33	17500	-	11550	10200				
				1312.0	485.0	28	536.0	568.0	3895.0						TBS	151	A8	R-4	2	7935	-	4450	3900
				51.7	19.1	35	21.1	22.4	153.3											33	17500	-	9800
19.5L-24	14	DW16Ax24	W16x24	1322.0	505.0	28	-	576.0	3932.0	TBS	155	A8	R-4	3	8915	-	5890	5195					
				52.0	19.9	35	-	22.7	154.8						37	19700	-	13000	11450				
				1322.0	505.0	28	-	576.0	3932.0						TBS	155	A8	R-4	3	8915	-	5000	4380
				52.0	19.9	35	-	22.7	154.8											37	19700	-	11050
21L-24	12	DW18Ax24	W18Lx24	1390.0	534.0	38	521.0	614.0	4072.0	TBS	155	A8	R-4	2	8915	-	5660	5195					
				54.7	21.0	48	20.5	24.2	160.3						31	19700	-	12500	11450				
				1390.0	534.0	38	521.0	614.0	4072.0						TBS	155	A8	R-4	2	8915	-	4680	4380
				54.7	21.0	48	20.5	24.2	160.3											31	19700	-	10350
18.4-26	12	W16Lx26	DW16A. W15Lx26	1430.0	494.0	28	541.0	635.0	4270.0	TBS	156	A8	R-4	3	9200	-	5840	5360					
				56.3	19.4	35	21.3	25.0	168.1						36	20300	-	12900	11850				
				1430.0	494.0	28	541.0	635.0	4270.0						TBS	156	A8	R-4	3	9200	-	4830	4520
				56.3	19.4	35	21.3	25.0	168.1											36	20300	-	10650
16.9-28	12	W15Lx28	W14Lx28	1427.0	455.0	33	647.0	647.0	4285.0	TBS/ TT	152	A8	R-4	3	8165	-	5180	3800					
				56.2	17.9	42	25.5	25.5	168.7						37	18000	-	11450	8400				
				1427.0	455.0	33	647.0	647.0	4285.0						TBS/ TT	152	A8	R-4	3	8165	-	4290	3690
				56.2	17.9	42	25.5	25.5	168.7											37	18000	-	9450
18.4-28	12	W16Lx28	W15Lx28	1500.0	504.0	39	-	663.0	4414.0	TBS/ TT	157	A8	R-4	3	9490	-	6020	5530					
				59.1	19.8	49	-	26.1	173.8						36	20950	-	13300	12200				
				1500.0	504.0	39	-	663.0	4414.0						TBS/ TT	157	A8	R-4	3	9490	-	4980	4660
				59.1	19.8	49	-	26.1	173.8											36	20950	-	11000
16.9-30	14	W15Lx30	W14Lx30	1444.0	444.0	31	-	670.0	4310.0	TBS/ TT	154	A8	R-4	3	8625	-	5475	5025					
				56.9	17.5	39	-	26.4	169.7						41	19050	-	12100	11100				
				1444.0	444.0	31	-	670.0	4310.0						TBS/ TT	154	A8	R-4	3	8625	-	4530	4240
				56.9	17.5	39	-	26.4	169.7											41	19050	-	10000



# CAMSO BHL 532

Formerly Solideal SLA R4

## ROADING COMFORT AND OFF-ROAD TRACTION

### FEATURES

- Engineered low-vibration tread design
- Continuous multi-angle tread lugs
- Hauler stepped tread design

### BENEFITS

- Minimizes vibrations for improved ride quality
- Minimizes vibrations for improved ride quality
- Improves self-cleaning and stone ejection for excellent traction

### PERFORMANCE

#### TIRE LIFE



#### PUNCTURE RESISTANCE



#### TRACTION



TIRE SIZE	PR	RIM SIZE		ACTUAL TIRE DIMENSIONS [mm] [inches]						TT/ TBS	LOAD INDEX	SPEED SYMBOL	TRA CODE	INFLATION PRESSURE [bar] [PSI]	MAXIMUM TIRE LOAD [kg] [lb]								
		Recommended	Alternative	O.D.	O.W.	O.T.D. [mm] [32nd]	M.D.S.	S.L.R.	R.C.						Static	Creep	8 km/h	16 km/h					
14.9-24	12	W13x24	W11x24. W12x24	1221	394	25	434	548	3644	TBS	145	A8	R-4	2.90	6670	-	4230	3885					
				48.1	15.5	31	17.1	21.6	143.5						41	14700	-	9350	8600				
				1221	394	25	434	548	3644						TBS	145	A8	R-4	2.90	6670	-	3500	3275
				48.1	15.5	31	17.1	21.6	143.5											41	14700	-	7750
16.9-24	12	W15Lx24	W14Lx24	1281	450	27	-	578	3823	TBS	149	A8	R-4	2.60	7475	-	4745	4355					
				50.4	17.7	34	-	22.8	150.5						38	16500	-	10450	9600				
				1281	450	27	-	578	3823						TBS	149	A8	R-4	2.60	7475	-	3930	3675
				50.4	17.7	34	-	22.8	150.5											38	16500	-	8700
17.5L-24	10	W15Lx24	W14Lx24	1243	445	25	481	546	3709	TBS	144	A8	R-4	2.20	6440	-	4090	3750					
				48.9	17.5	31	18.9	21.5	146.0						31	14200	-	9050	8300				
				1243	445	25	481	546	3709						TBS	144	A8	R-4	2.20	6440	-	3380	3165
				48.9	17.5	31	18.9	21.5	146.0											31	14200	-	7450
19.5L-24	12	DW16Ax24	W16x24	1320	495	26	-	585	3978	TBS	151	A8	R-4	2.30	7935	-	5240	4625					
				52.0	19.5	33	-	23.0	156.6						33	17500	-	11550	10200				
				1320	495	26	-	585	3978						TBS	151	A8	R-4	2.30	7935	-	4450	3900
				52.0	19.5	33	-	23.0	156.6											33	17500	-	9800
21L-24	12	DW18Ax24	W18Lx24	1377	534	28	580	601	4110	TBS	155	A8	R-4	2.20	8915	-	5660	5195					
				54.2	21.0	35	22.8	23.7	161.8						31	19700	-	12500	11450				
				1377	534	28	580	601	4110						TBS	155	A8	R-4	2.20	8915	-	4680	4380
				54.2	21.0	35	22.8	23.7	161.8											31	19700	-	10350
18.4-26	12	W16Lx26	DW16A. W15Lx26	1449	490	26	525	626	4269	TBS/ TT	156	A8	R-4	2.50	9200	-	5840	5360					
				57.0	19.3	33	20.7	24.6	168.1						36	20300	-	12900	11850				
				1449	490	26	525	626	4269						TBS/ TT	156	A8	R-4	2.50	9200	-	4830	4520
				57.0	19.3	33	20.7	24.6	168.1											36	20300	-	10650
16.9-28	12	W15Lx28	W14Lx28	1417	455	28	547	621	4224	TBS/ TT	152	A8	R-4	2.60	8165	-	5180	3800					
				55.8	17.9	35	21.5	24.4	166.3						37	18000	-	11450	8400				
				1417	455	28	547	621	4224						TBS/ TT	152	A8	R-4	2.60	8165	-	4290	3690
				55.8	17.9	35	21.5	24.4	166.3											37	18000	-	9450



# CAMSO 4L R1

## LOADING COMFORT AND OFF-ROAD TRACTION

### FEATURES

- Aggressive curved R1 tread pattern
- Hauler stepped tread design
- Robust carcass design

### BENEFITS

- Maximizes traction and improves ride quality
- Maximizes tread cleanout in off-road conditions for improved traction
- Improves stability and side impact resistance

### PERFORMANCE

#### TIRE LIFE



#### PUNCTURE RESISTANCE



#### TRACTION



TIRE SIZE	PR	TT / TBLs	RIM SIZE		ACTUAL TIRE DIMENSIONS [mm] [inches]					LOAD INDEX	SPEED SYMBOL	TRA CODE	INFLATION PRESSURE [bar] [PSI]	SERVICE	APPLICATION	MAXIMUM TIRE LOAD [kg] [lb]										
			Recom- mended	Alterna- tive	O.D.	O.W.	O.T.D. [mm] [32nd]	S.L.R.	R.C.							STATIC	8 km/h 16 km/h 40 km/h 50 km/h									
																	5 mph	10 mph	25 mph	30 mph						
10.0/75-15.3	8	TT / TBLs	9x15.3	-	795	261	22	344	2373	119	A8	R-4	3.10	DUMPER	FREE	2245	1905	1810	-	1225						
					31.3	10.3	28	13.5	93.4							4950	4200	4000	-	2700						
					795	261	22	344	2373							106	A8	R-1	3.10	DUMPER	DRIVE	2235	1330	1265	-	855
					31.3	10.3	28	13.5	93.4													4950	2950	2800	-	1900
11.5/80-15.3	8	TT / TBLs	9x15.3	-	853	286	23	362	2549	126	A8	R-1	2.70	DUMPER	FREE	2805	2380	2260	-	1530						
					33.6	11.3	29	14.3	100.4							6200	5250	5000	-	3400						
					853	286	23	362	2549							114	A8	R-1	2.70	DUMPER	DRIVE	2775	1650	1570	-	1060
					33.6	11.3	29	14.3	100.4													6150	3650	3450	-	2350
12.5/80-18	12	TBLs	W9x18	11x18	989.0	312.0	30	450.0	3005.0	129	A6	R-1	4	-	DRIVE	4375	2410	2240	1665	-						
					38.9	12.3	38	17.7	118.3							9650	5300	4950	3700	-						
					989.0	312.0	30	450.0	3005.0							142	A6	R-1	4	-	FREE ROLLING	4375	3450	3205	2385	-
					38.9	12.3	38	17.7	118.3													9650	7600	7100	5250	-
18-19.5	16	TT / TBLs	14x19.5	-	1105	448	26	497	3667	160	A8	R-1	4.50	MPT	DRIVE	7425	5850	5400	-	4050						
					43.5	17.6	33	19.6	144.4							16400	12900	11900	-	8950						
405/70-20 (16/70-20)	14	TT / TBLs	13x20	13SDC	1098	410	34	505	3332	154	A8	R-1	3.50	MPT	FREE	6190	5250	4990	-	3375						
					43.2	16.1	43	19.9	131.2							13650	11600	11000	-	7450						
					1098	410	34	505	3332							142	A8	R-1	3.50	MPT	DRIVE	6230	3710	3525	-	2385
					43.2	16.1	43	19.9	131.2													13750	8200	7800	-	5250
18-22.5	16	TT / TBLs	14x22.5	-	1105	448	28	494	3667	163	A8	R1	4.50	MPT	DRIVE	8045	6340	5850	-	4390						
					43.5	17.6	35	19.4	144.4							17750	14000	12900	-	9700						
405/70-24 (16/70-24)	14	TT / TBLs	13x24	13SDC	1202	406	27	543	3587	156	A8	R-1	2.70	MPT	FREE	6600	5600	5320	-	3600						
					47.3	16.0	34	21.4	141.2							14550	12350	11750	-	7950						
					1202	406	27	543	3587							144	A8	R-1	2.70	MPT	DRIVE	6580	3920	3725	-	2520
					47.3	16.0	34	21.4	141.2													14550	8650	8200	-	5550



# CAMSO 4L R1 (cont.)

TIRE SIZE	PR	TT / TBLs	RIM SIZE		ACTUAL TIRE DIMENSIONS [mm] [inches]					LOAD INDEX	SPEED SYMBOL	TRA CODE	INFLATION PRESSURE [bar] [PSI]	SERVICE	APPLICATION	MAXIMUM TIRE LOAD [kg] [lb]										
			Recom- mended	Alterna- tive	O.D.	O.W.	O.T.D. [mm] [32nd]	S.L.R.	R.C.							STATIC	8 km/h 16 km/h 40 km/h 50 km/h									
																	5 mph	10 mph	25 mph	30 mph						
15.5/80-24	12	TT / TBLs	13x24	W12/W13/ W14L	1297	411	40	550	3852	157	A8	R-1	3.00	MPT	FREE	2245	1905	1810	-	1225						
					51.1	16.2	50	21.7	151.7							4950	4200	4000	-	2700						
					1297	411	40	550	3852							145	A8	R-1	3.00	MPT	DRIVE	2235	1330	1265	-	855
					51.1	16.2	50	21.7	151.7													4950	2950	2800	-	1900
15.5/80-24	14	TT / TBLs	13x24	W12/W13/ W14L	1294	402	40	551	3864	160	A8	R-1	3.50	MPT	FREE	2805	2380	2260	-	1530						
					50.9	15.8	50	21.7	152.1							6200	5250	5000	-	3400						
					1294	402	40	551	3864							148	A8	R-1	3.50	MPT	DRIVE	2775	1650	1570	-	1060
					50.9	15.8	50	21.7	152.1													6150	3650	3450	-	2350
16.5/85-24	8	TBLs	13x24	W13/W14L/ W15L	1327	417	26	575	4026	154	A8	R-1	1.90	MPT	FREE	6190	5250	4990	-	3375						
					52.2	16.4	33	22.6	158.5							13650	11600	11000	-	7450						
					1327	417	26	575	4026							142	A8	R-1	1.90	MPT	DRIVE	6230	3710	3525	-	2385
					52.2	16.4	33	22.6	158.5													13750	8200	7800	-	5250
16.5/85-24	14	TT / TBLs	13x24	W13/W14L/ W15L	1327	428	25	256	3998	165	A8	R-1	3.30	MPT	FREE	8500	7210	6850	-	4635						
					52.2	16.9	31	10.1	157.4							18750	15900	15100	-	10250						
					1327	428	25	256	3998							153	A8	R-1	3.30	MPT	DRIVE	8580	5110	4855	-	3285
					52.2	16.9	31	10.1	157.4													18950	11300	10700	-	7250



# CAMSO BHL 530

Formerly Solideal MR F3

## PERFORMANCE AND QUALITY YOU CAN RELY ON

### FEATURES

- Engineered F3 rib tread design
- Robust carcass
- Deep tread depth

### BENEFITS

- Provides smooth ride and effective steering
- Reduces tread crowning for even wearing and excellent stability
- Enhances longevity

### PERFORMANCE



TIRE SIZE	PR	RIM SIZE		ACTUAL TIRE DIMENSIONS [mm] [inches]						TT/ TBLS	LOAD INDEX	SPEED SYMBOL	TRA CODE	INFLATION PRESSURE [bar] [PSI]	MAXIMUM TIRE LOAD [kg] [lb]			
		Recommended	Alternative	O.D.	O.W.	O.T.D. [mm] [32nd]	M.D.S.	S.L.R.	R.C.						Static	Creep	8 km/h	16 km/h
11L-15SL	10	8LBx15	10LBx15	768	280	13.5	278	362	2397	TBLS	118	B	F-3	3.00	2640	-	-	-
				30.2	11.0	17	10.9	14.3	94.4					42.86	5850	-	-	-
11L-16SL	12	8LBx16	W8L, 10LB, W10Lx16	802	262	13.5	278	358	2397	TBLS	123	B	F-3	3.60	3110	-	-	-
				31.6	10.3	17	10.9	14.1	94.4					51.43	6850	-	-	-
14.5/75-16.1SL	10	W11Cx16.1	-	940	361	17	391	417	2706	TBLS	121	A8	F-3	2.80	4350	-	2480	2175
				37.0	14.2	21	15.4	16.4	106.5					40.00	9600	-	5450	4800



# CAMSO TLH 792S

Formerly Solideal SolidAir TLH

## EXTREME-DUTY FLAT-FREE TIRE SOLUTION

### FEATURES

- Engineered solid tire solution
- Patented triangular aperture design
- Massive tread depth
- Hauler stepped tread design

### BENEFITS

- Provides flat-free operation and ultimate durability
- Optimizes stability, strength and comfort
- Improves durability and traction
- Provides excellent cleanout for improved traction

### PERFORMANCE



TIRE SIZE	RIM SIZE	ACTUAL TIRE DIMENSIONS [mm] [inches]						HEEL		LOAD CAPACITY [kg] [lb]							
										COUNTERBALANCED LIFT TRUCKS				OTHER VEHICLES			
		LOAD WHEEL		STEERING WHEEL		6 km/h 4 mph		10 km/h 6 mph		25 km/h 16 mph		0 km/h 0 mph					
13.00-24	8.50V	1290	330	70	377	595	4027	-	■	-	-	-	7650	6950	6375	9625	
		50.8	13.0	88	14.8	23.4	158.5	-	■	-	-	-	16900	15350	14050	21250	
14.00-24	8.50V	1330	350	88	394	617	4164	-	■	-	-	-	8460	7685	7050	10645	
		52.4	13.8	111	15.5	24.3	163.9	-	■	-	-	-	18700	16950	15550	23500	



# CAMSO SL G3

## MULTI-SURFACE STABILITY AND PERFORMANCE

### FEATURES

- Extra-deep non-directional tread pattern
- Optimized lug-to-void ratio
- Heavy-duty sidewall construction
- Flatter tread profile

### BENEFITS

- Optimizes durability and traction on mixed and hard surfaces
- Provides excellent traction for mixed and hard surface applications
- Provides superior side impact resistance and stability
- Resists tread crowning for even wearing

### PERFORMANCE

#### TIRE LIFE



#### PUNCTURE RESISTANCE



#### TRACTION



TIRE SIZE	PR	TT / TBLs	RIM SIZE		ACTUAL TIRE DIMENSIONS [mm] [in]						LOAD INDEX	SPEED SYMBOL	SERVICE	TRA CODE
			Recommended	Alternative	O.D.	O.W.	O.T.D. [mm] [32nd]	M.D.S.	S.L.R.	R.C.				
13.00-24 TG	12	TT / TBLs	8.00TG	10.00VA 9.00DC	1303	367	28	413	576	3832	143	A8	GRADER	G-3
					51.3	14.4	35	16.3	22.7	150.9				
					1303	367	28	413	576	3832	168	A2	LOADER-DOZER	L-3
					51.3	14.4	35	16.3	22.7	150.9				
14.00-24 TG	12	TT / TBLs	8.00TG	10.00VA 9.00DC	1354	385	30	445	592	3998	147	A8	GRADER	G-3
					53.3	15.2	38	17.5	23.3	157.4				
					1354	385	30	445	592	3998	166	A2	LOADER-DOZER	L-3
					53.3	15.2	38	17.5	23.3	157.4				
14.00-24 TG	16	TT / TBLs	10.00VA	-	1338	393	30	428	622	3993	153	A8	GRADER	G-3
					52.7	15.5	38	16.9	24.5	157.2				
					1338	393	30	428	622	3993	177	A2	LOADER-DOZER	L-3
					52.7	15.5	38	16.9	24.5	157.2				

MAXIMUM TIRE LOAD [kg] [lb] versus INFLATION PRESSURE [bar] [PSI]																			
1.25	1.50	1.75	2.00	2.25	2.50	2.75	3.00	3.25	3.50	3.75	4.00	4.25	4.50	4.75	5.00	5.25	5.50	5.75	6.00
18	21	25	29	32	36	39	43	46	50	54	57	61	64	68	71	75	79	82	86
1700	1900	2060	2240	2360(10)	2500	2650	2725(12)	2800(14)	2900(16)	-	-	-	-	-	-	-	-	-	-
3750	4200	4550	4950	5200(10)	5500	5850	6000(12)	6200(14)	6400(16)	-	-	-	-	-	-	-	-	-	-
-	-	-	-	-	-	-	-	4500	4750	5000(10)	5150	5300	5600(12)	5600	5800	6000(14)	6150	6300	6500(16)
-	-	-	-	-	-	-	-	9950	10500	11050(10)	11350	11700	12350(12)	12350	12800	13250(14)	13600	13900	14350(16)
2060	2300	2500	2650	2800	3075(12)	3250	3450(14)	3550	3650(16)	-	-	-	-	-	-	-	-	-	-
4550	5100	5500	5850	6200	6800(12)	7150	7600(14)	7850	8050(16)	-	-	-	-	-	-	-	-	-	-
-	-	-	-	-	-	-	-	5450	5600(10)	6000	6150	6300(12)	6500	6700(14)	6900	7100	7300(16)	-	-
-	-	-	-	-	-	-	-	12050	12350(10)	13250	13600	13900(12)	14350	14800(14)	15250	15650	16100(16)	-	-
2060	2300	2500	2650	2800	3075(12)	3250	3450(14)	3550	3650(16)	-	-	-	-	-	-	-	-	-	-
4550	5100	5500	5850	6200	6800(12)	7150	7600(14)	7850	8050(16)	-	-	-	-	-	-	-	-	-	-
-	-	-	-	-	-	-	-	5450	5600(10)	6000	6150	6300(12)	6500	6700(14)	6900	7100	7300(16)	-	-
-	-	-	-	-	-	-	-	12050	12350(10)	13250	13600	13900(12)	14350	14800(14)	15250	15650	16100(16)	-	-





# CAMSO SL G2

## HEAVY-DUTY OFF-ROAD DURABILITY AND TRACTION

### FEATURES

- Extra-deep tread pattern
- Hauler stepped tread design
- Heavy-duty sidewall construction
- Flatter tread profile

### BENEFITS

- Provides best durability and traction in off-road conditions
- Provides excellent cleanout for improved traction
- Provides superior side impact resistance and stability
- Resists tread crowning for even wearing

### PERFORMANCE



TIRE SIZE	PR	TT / TBLs	RIM SIZE		ACTUAL TIRE DIMENSIONS [mm] [in]						LOAD INDEX	SPEED SYMBOL	SERVICE	TRA CODE
			Recommended	Alternative	O.D.	O.W.	O.T.D. [mm] [32nd]	M.D.S.	S.L.R.	R.C.				
13.00-24 TG	12	TT / TBLs	8.00TG	10.00VA 9.00DC	1261	358	22	413	559	3789	143	A8	GRADER	G-2
					49.6	14.1	28	16.3	22.0	149.2				
					1261	358	22	413	559	3789	168	A2	LOADER-DOZER	L-2
					49.6	14.1	28	16.3	22.0	149.2				
13.00-24 TG	12	TT / TBLs	8.00TG	10.00VA 9.00DC	1324	384	22	411	569	3982	147	A8	GRADER	G-2
					52.1	15.1	28	16.2	22.4	156.8				
					1324	384	22	411	569	3982	166	A2	LOADER-DOZER	L-2
					52.1	15.1	28	16.2	22.4	156.8				

MAXIMUM TIRE LOAD [kg] [lb] versus INFLATION PRESSURE [bar] [PSI]																			
1.25	1.50	1.75	2.00	2.25	2.50	2.75	3.00	3.25	3.50	3.75	4.00	4.25	4.50	4.75	5.00	5.25	5.50	5.75	6.00
18	21	25	29	32	36	39	43	46	50	54	57	61	64	68	71	75	79	82	86
1700	1900	2060	2240	2360(10)	2500	2650	2725(12)	2800(14)	2900(16)	-	-	-	-	-	-	-	-	-	-
3750	4200	4550	4950	5200(10)	5500	5850	6000(12)	6200(14)	6400(16)	-	-	-	-	-	-	-	-	-	-
-	-	-	-	-	-	-	-	4500	4750	5000(10)	5150	5300	5600(12)	5600	5800	6000(14)	6150	6300	6500(16)
-	-	-	-	-	-	-	-	9950	10500	11050(10)	11350	11700	12350(12)	12350	12800	13250(14)	13600	13900	14350(16)
2060	2300	2500	2650	2800	3075(12)	3250	3450(14)	3550	3650(16)	-	-	-	-	-	-	-	-	-	-
4550	5100	5500	5850	6200	6800(12)	7150	7600(14)	7850	8050(16)	-	-	-	-	-	-	-	-	-	-
-	-	-	-	-	-	-	-	5450	5600(10)	6000	6150	6300(12)	6500	6700(14)	6900	7100	7300(16)	-	-
-	-	-	-	-	-	-	-	12050	12350(10)	13250	13600	13900(12)	14350	14800(14)	15250	15650	16100(16)	-	-



# CAMSO TLH 532

Formerly Solideal TH2

## HIGH QUALITY FOR STANDARD DUTY

### FEATURES

- Deep tread pattern
- Optimized tread pattern
- Flatter tread profile

### BENEFITS

- Enhances durability and traction
- Provides good traction in off-road conditions
- Resists tread crowning for even wearing

### PERFORMANCE

#### TIRE LIFE



#### PUNCTURE RESISTANCE



#### TRACTION



TIRE SIZE	PR	TT / TBLs	RIM SIZE		ACTUAL TIRE DIMENSIONS [mm] [in]						LOAD INDEX	SPEED SYMBOL	SERVICE	TRA CODE
			Recommended	Alternative	O.D.	O.W.	O.T.D. [mm] [32nd]	M.D.S.	S.L.R.	R.C.				
13.00-24 TG	12	TT / TBLs	8.00TG	10.00VA 9.00DC	1303	367	28	413	576	3832	143	A8	GRADER	G-3
					51.3	14.4	35	16.3	22.7	150.9				
					1303	367	28	413	576	3832	168	A2	LOADER-DOZER	L-3
					51.3	14.4	35	16.3	22.7	150.9				
14.00-24 TG	12	TT / TBLs	8.00TG	10.00VA 9.00DC	1354	385	30	445	592	3998	147	A8	GRADER	G-3
					53.3	15.2	38	17.5	23.3	157.4				
					1354	385	30	445	592	3998	166	A2	LOADER-DOZER	L-3
					53.3	15.2	38	17.5	23.3	157.4				

MAXIMUM TIRE LOAD [kg] [lb] versus INFLATION PRESSURE [bar] [PSI]																			
1.25	1.50	1.75	2.00	2.25	2.50	2.75	3.00	3.25	3.50	3.75	4.00	4.25	4.50	4.75	5.00	5.25	5.50	5.75	6.00
18	21	25	29	32	36	39	43	46	50	54	57	61	64	68	71	75	79	82	86
1700	1900	2060	2240	2360(10)	2500	2650	2725(12)	2800(14)	2900(16)	-	-	-	-	-	-	-	-	-	-
3750	4200	4550	4950	5200(10)	5500	5850	6000(12)	6200(14)	6400(16)	-	-	-	-	-	-	-	-	-	-
-	-	-	-	-	-	-	-	4500	4750	5000(10)	5150	5300	5600(12)	5600	5800	6000(14)	6150	6300	6500(16)
-	-	-	-	-	-	-	-	9950	10500	11050(10)	11350	11700	12350(12)	12350	12800	13250(14)	13600	13900	14350(16)
1700	1900	2060	2240	2360(10)	2500	2650	2725(12)	2800(14)	2900(16)	-	-	-	-	-	-	-	-	-	-
3750	4200	4550	4950	5200(10)	5500	5850	6000(12)	6200(14)	6400(16)	-	-	-	-	-	-	-	-	-	-
-	-	-	-	-	-	-	-	4500	4750	5000(10)	5150	5300	5600(12)	5600	5800	6000(14)	6150	6300	6500(16)
-	-	-	-	-	-	-	-	9950	10500	11050(10)	11350	11700	12350(12)	12350	12800	13250(14)	13600	13900	14350(16)



# CAMSO TM R4

## DURABLE OFF-ROAD PERFORMANCE

### FEATURES

- Hauled stepped tread design
- Tapered tread lugs
- Optimized lug-to-void ratio
- Heavy-duty carcass

### BENEFITS

- Enhances tread cleanout for improved traction
- Improves lug stability for even wearing
- Enhances longevity and tread puncture resistance
- Provides excellent stability and side impact resistance

### PERFORMANCE

#### TIRE LIFE



#### PUNCTURE RESISTANCE



#### TRACTION



TIRE SIZE	PR	TT / TBLs	RIM SIZE		ACTUAL TIRE DIMENSIONS [mm] [inches]					LOAD INDEX	SPEED SYMBOL	TRA CODE	INFLATION PRESSURE [bar] [PSI]	SERVICE	APPLICATION	MAXIMUM TIRE LOAD [kg] [lb]				
			Recom-mended	Alterna-tive	O.D.	O.W.	O.T.D. [mm] [32nd]	S.L.R.	R.C.							STATIC				
																	8 km/h	16 km/h	40 km/h	50 km/h
18-19.5	16	TT / TBLs	14x19.5	-	1117	454	32	505	3352	160	A8	R-4	4.50	MPT	DRIVE	9090	6300	5985	-	4050
					44.0	17.9	40	19.9	132.0							20050	13900	13200	-	8950
405/70-20 (16/70-20)	14	TT / TBLs	13x20	13SDC	1085	403	27	490	3238	154	A8	R-4	3.50	MPT	FREE	6190	5250	4990	-	3375
					42.7	15.9	34	19.3	127.5				13650		11600	11000	-	7450		
					1085	403	27	490	3238	142	A8	R-4	3.50	MPT	DRIVE	6230	3710	3525	-	2385
					42.7	15.9	34	19.3	127.5				13750		8200	7800	-	5250		
18-22.5	16	TT / TBLs	14x22.5	-	1209	444	35	545	3638	163	A8	R-4	4.50	MPT	DRIVE	9850	6825	6485	-	4390
					47.6	17.5	44	21.5	143.2				21750			15050	14300	-	9700	
400/80-24 (15.5/80-24)	16	TBLs	13x24	13SDC	1244	411	37	572	3756	156	A8	R-4	4.00	MPT	CONSTANT	6190	5250	4990	-	3375
					49.0	16.2	47	22.5	147.9				13650		11600	11000	-	7450		
					1244	411	37	572	3756	156	A8	R-4	4.00	MPT	CYCLIC	6230	3710	3525	-	2385
					49.0	16.2	47	22.5	147.9				13750		8200	7800	-	5250		
400/80-24 (15.5/80-24)	20	TBLs	13x24	13SDC	1238	409	37	568	3771	162	A8	R-4	5.00	MPT	CONSTANT	10925	5940	5370	-	4560
					48.7	16.1	47	22.4	148.5				24100		13100	11850	-	10050		
					1238	409	37	568	3771	162	A8	R-4	5.00	MPT	CYCLIC	10925	7125	6365	-	4560
					48.7	16.1	47	22.4	148.5				24100		15750	14050	-	10050		
440/80-24 (16.5/85-24)	22	TBLs	DW14Lx24	DW13/DW13L/DW15L	1328	453	33	600	4016	168	A8	R-4	5.00	MPT	CONSTANT	12880	7000	6330	-	5375
					52.3	17.8	42	23.6	158.1				28396		15679	14074	-	11850		
					1328	453	33	600	4016	168	A8	R-4	5.00	MPT	CYCLIC	12880	8400	7505	-	5375
					52.3	17.8	42	23.6	158.1				28396		19136	16420	-	11850		
460/70-24 IND	-	TL	DW15L	DW14L/DW16L/TW14L/TW15L/TW16L	1261	454	30	-	-	159	A8	R-4	5.00	IND. TRACTOR	CYCLIC	10065	7305	6565	4855	4680
					49.6	17.9	39	-	-				22190		16105	14475	10705	10320		
					1261	454	30	-	-	159	A8	R-4	5.00	IND. TRACTOR	CONSTANT	10065	6345	5470	4640	4550
					49.6	17.9	39	-	-				22190		13990	12060	10230	10030		



# CAMSO 4L13

## A SMOOTH RIDE WITH ENHANCED TRACTION

### FEATURES

- Versatile directional tread pattern with center block
- Hauled stepped tread design
- Open shoulder tread design
- Heavy-duty carcass

### BENEFITS

- Reduces vibrations and enhances driving comfort
- Maximizes tread cleanout in off-road conditions for improved traction
- Provides excellent traction in off-road conditions
- Provides excellent stability and side impact resistance

### PERFORMANCE

#### TIRE LIFE



#### PUNCTURE RESISTANCE



#### TRACTION



TIRE SIZE	PR	TT / TBLs	RIM SIZE		ACTUAL TIRE DIMENSIONS [mm] [inches]					LOAD INDEX	SPEED SYMBOL	INFLATION PRESSURE [bar] [PSI]	SERVICE	APPLICATION	MAXIMUM TIRE LOAD [kg] [lb]						
			Recom-mended	Alterna-tive	O.D.	O.W.	O.T.D. [mm] [32nd]	S.L.R.	R.C.						STATIC						
																10 km/h	15 km/h	25 km/h	30 km/h	40 km/h	50 km/h
10.0/75-15.3	8	TT / TBLs	9x15.3	-	797	265	29	119	4016	119	A8	3.10	MPT	FREE	2245	1905	1810	1620	1525	1360	1225
					31.4	10.4	37	23.6	158.1					4950	4200	3990	3570	3360	3000	2700	
					797	265	29	106	4016	106	A8	3.10	MPT	DRIVE	2245	1330	1265	1130	1065	950	855
					31.4	10.4	37	23.6	158.1					4950	2935	2785	2495	2345	2095	1885	
11.5/80-15.3	10	TT / TBLs	9x15.3	-	847	294	25	400	2582	131	A8	3.40	MPT	FREE	3220	2730	2595	2320	2185	1950	1755
					33.3	11.6	31	15.7	101.7					7100	6020	5720	5115	4815	4300	3870	
					847	294	25	400	2582	119	A8	3.40	MPT	DRIVE	3220	1905	1810	1620	1525	1360	1225
					33.3	11.6	31	15.7	101.7					7100	4200	3990	3570	3360	3000	2700	
10.5-18	10	TT / TBLs	9x18	9SDC	891	269	25	393	2650	126	B	3.75	MPT	-	4875	3510	3200	-	2805	1905	2185
					35.1	10.6	31	15.5	104.3					10750	7750	7050	-	6200	4200	4800	
12.5-18	12	TT / TBLs	11x18	11SDC 12SDC 12	989	335	22	-	-	131	B	3.50	MPT	-	4250	-	-	-	3200	2185	1905
					38.9	13.2	28	-	-					10750	-	-	-	7050	4800	4450	
10.5-20	10	TT / TBLs	9x20	9SDC	950	278	22	423	2825	128	B	3.50	MPT	-	4500	3240	2970	-	2970	2015	2015
					37.4	10.9	28	16.7	111.2					9950	7150	6550	-	6550	4450	4450	
12.5-20	12	TT / TBLs	11x20	11SDC 12SDC 12	1054	348	23	471	3138	132	B	3.50	MPT	-	5000	3600	3300	-	3300	2240	2240
					41.5	13.7	29	18.5	123.5					11050	7950	7300	-	7300	4950	4950	
14.5-20	14	TT / TBLs	11x20	11SDC 12SDC 12	1107	359	27	490	3277	138	B	3.50	MPT	-	5900	4250	3895	-	3895	2645	2645
					43.6	14.1	34	19.3	129.0					13000	9400	8600	-	8600	5850	5850	
405/70-20 (16/70-20)	14	TT / TBLs	13x20	13SDC	1081	442	26	503	3183	154	A8	3.50	MPT	FREE	6190	5250	4990	-	4990	3375	3375
					42.6	17.4	33	19.8	125.3					13650	11600	11000	-	11000	7450	7450	
					1081	442	26	503	3183	142	A8	3.50	MPT	DRIVE	6230	3710	3525	-	3525	2385	2385
					1.7	0.7	33	0.8	4.9					13750	8200	7800	-	7800	5250	5250	
405/70-24 (16/70-24)	14	TT / TBLs	13x24	13SDC	1188	421	27	600	4016	156	A8	3.50	MPT	FREE	6600	5600	5320	-	5320	3600	3600
					46.8	16.6	34	23.6	158.1					14550	12350	11750	-	11750	7950	7950	
					1188	421	27	600	4016	144	A8	3.50	MPT	DRIVE	6580	3920	3725	-	3725	2520	2520
					46.8	16.6	34	23.6	158.1					14550	8650	8200	-	8200	5550	5550	



# CAMSO WHL 753R

Formerly Solideal SRGP

## RADIAL PERFORMANCE, VERSATILITY AND DURABILITY

### FEATURES

- Heavy-duty Dual-Star carcass
- Optimized tread pattern
- Offset, tapered tread lugs
- Non-directional stepped design

### BENEFITS

- Enhances stability and suitability for both one-star and two-star applications
- Provides excellent durability and low wear rate
- Reduces vibration for improved ride quality
- Enhances cleanout for improved traction

### PERFORMANCE

#### TIRE LIFE



#### PUNCTURE RESISTANCE



#### TRACTION



TIRE SIZE	PR	TT / TBLS	RIM SIZE		ACTUAL TIRE DIMENSIONS [mm] [in]						LOAD INDEX	SPEED SYMBOL	SERVICE	TRA CODE
			Recommended	Alternative	O.D.	O.W.	O.T.D. [mm] [32nd]	M.D.S.	S.L.R.	R.C.				
17.5R25	DUAL STAR® */**	TBLS	14.00/1.5	14.00/1.3 (DC); 13.00/1.4 (DC)	1348	469	28	-	601	4023	182	A2	LOADER - DOZER	L-3
					53.1	18.5	35	-	23.7	158.4				
					1348	469	28	-	601	4023	167	B	EARTHMOVER	E-3
					53.1	18.5	35	-	23.7	158.4				
					1348	469	28	-	601	4023				
53.1	18.5	35	-	23.7	158.4	153	A8	GRADER	G-3					
20.5R25	DUAL STAR® */**	TBLS	17.00/2.0	-	1492	548	33	-	665	4453	193	A2	LOADER - DOZER	L-3
					58.7	21.6	42	-	26.2	175.3				
					1492	548	33	-	665	4453	177	B	EARTHMOVER	E-3
					58.7	21.6	42	-	26.2	175.3				
					1492	548	33	-	665	4453				
58.7	21.6	42	-	26.2	175.3	161	A8	GRADER	G-3					
23.5R25	DUAL STAR® */**	TBLS	19.50/2.5	-	1615	624	35	-	720	4820	201	A2	LOADER - DOZER	L-3
					63.6	24.6	44	-	28.3	189.8				
					1615	624	35	-	720	4820	185	B	EARTHMOVER	E-3
					63.6	24.6	44	-	28.3	189.8				
					1615	624	35	-	720	4820				
63.6	24.6	44	-	28.3	189.8	170	A8	GRADER	G-3					
26.5R25	DUAL STAR® */**	TBLS	22.00/3.0	-	1746	704	40	-	779	5211	209	A2	LOADER - DOZER	L-3
					68.7	27.7	50	-	30.7	205.2				
					1746	704	40	-	779	5211	193	B	EARTHMOVER	E-3
					68.7	27.7	50	-	30.7	205.2				
29.5R25	DUAL STAR® */**	TBLS	25.00/3.5	-	1870	782	40	-	834	5581	216	A2	LOADER - DOZER	L-3
					73.6	30.8	50	-	32.8	219.7				
					1870	782	40	-	834	5581	200	B	EARTHMOVER	E-3
					73.6	30.8	50	-	32.8	219.7				

MAXIMUM TIRE LOAD [kg] [lb] versus INFLATION PRESSURE [bar] [PSI]																			
1.25	1.50	1.75	2.00	2.25	2.50	2.75	3.00	3.25	3.50	3.75	4.00	4.25	4.50	4.75	5.00	5.25	5.50	5.75	6.00
18	21	25	29	32	36	39	43	46	50	54	57	61	64	68	71	75	79	82	86
-	-	-	3650	4000	4250	4625	4850	5300	5600	5800	6000	6150	6500	6700	7100	7300	7500	7750	8000
-	-	-	8050	8800	9350	10200	10700	11700	12300	12800	13200	13600	14300	14800	15700	16100	16500	17100	17600
-	-	-	-	-	-	3350	3550	3750	4000	4125	4375	4625	4750	5000	5150	5450	-	-	-
-	-	-	-	-	-	7400	7850	8250	8800	9100	9650	10200	10500	11000	11400	12000	-	-	-
-	-	2360	2650	2900	3075	3350	3650	-	-	-	-	-	-	-	-	-	-	-	-
-	-	5200	5840	6400	6800	7400	8050	-	-	-	-	-	-	-	-	-	-	-	-
-	-	-	10500	11400	12300	13200	13900	14800	15700	16500	17600	18200	19300	19800	20900	21500	22000	22700	24000
-	-	-	4750	5150	5600	6000	6300	6700	7100	7500	8000	8250	8750	9000	9500	9750	10000	10300	10900
-	-	-	-	-	-	4375	4750	5000	5300	5600	5800	6150	6500	6700	6900	7300	-	-	-
-	-	-	-	-	-	9650	10500	11000	11700	12300	12800	13600	14300	14800	15200	16100	-	-	-
-	-	3150	3450	3875	4125	4375	4625	-	-	-	-	-	-	-	-	-	-	-	-
-	-	6950	7600	8550	9100	9650	10200	-	-	-	-	-	-	-	-	-	-	-	-
-	-	-	6000	6500	7100	7750	8250	8750	9250	9750	10300	10600	11200	11500	12150	12500	12850	13200	13600
-	-	-	13200	14300	15700	17100	18200	19300	20400	21500	22700	23400	24700	25400	26800	27600	28300	29100	30000
-	-	-	-	-	-	5600	6000	6500	6700	7100	7500	7750	8250	8500	9000	9250	-	-	-
-	-	-	-	-	-	12300	13200	14300	14800	15700	16500	17100	18200	18700	19800	20400	-	-	-
-	-	4000	4500	4875	5300	5600	6000	-	-	-	-	-	-	-	-	-	-	-	-
-	-	8800	9900	10700	11700	12300	13200	-	-	-	-	-	-	-	-	-	-	-	-
-	-	-	7500	8250	9000	9500	10300	10900	11500	12150	12850	13200	14000	14500	15000	15500	16000	16500	17000
-	-	-	16500	18200	19800	20900	22700	24000	25400	26800	28300	29100	30900	32000	33100	34200	35300	36400	37500
-	-	-	-	-	-	7100	7500	8000	8500	9000	9500	9750	10300	10600	11200	11500	-	-	-
-	-	-	-	-	-	15700	16500	17600	18700	19800	20900	21500	22700	23400	24700	25400	-	-	-
-	-	-	-	-	-	-	-	-	-	-	-	15500	16000	17000	17500	18000	19000	19500	20600
-	-	-	-	-	-	-	-	-	-	-	-	34200	35300	37500	38600	39700	41900	43000	44100
-	-	-	-	-	-	8500	9250	9750	10300	10900	11500	11800	12500	12850	13600	14000	-	-	-
-	-	-	-	-	-	18700	20400	21500	22700	24000	25400	26000	27600	28300	30000	30900	-	-	-



# CAMSO WHL 775R

Formerly Solideal SRLD

## MULTI-SURFACE DURABILITY AT ITS BEST

### FEATURES

- Extra-deep lug tread
- Robust Dual-Star carcass
- Contoured lug base
- Heavy-duty sidewall construction

### BENEFITS

- Enhances durability and resistance to flat tires for extreme mixed and hard surface applications
- Provides excellent stability and enhanced loading capacity
- Promotes stone ejection and resistance to cracking
- Protects against side impacts and deformation under heavy load

### PERFORMANCE

#### TIRE LIFE



#### PUNCTURE RESISTANCE



#### TRACTION



TIRE SIZE	PR	TT / TBLS	RIM SIZE		ACTUAL TIRE DIMENSIONS [mm] [in]						LOAD INDEX	SPEED SYMBOL	SERVICE	TRA CODE
			Recommended	Alternative	O.D.	O.W.	O.T.D. [mm] [32nd]	M.D.S.	S.L.R.	R.C.				
20.5R25	DUAL STAR® */**	TBLS	17.00/2.0	-	1544	517	74	-	704	4637	193	A2	LOADER - DOZER	L-5
					60.8	20.4	93.2	-	27.7	182.6				
					1544	517	74	-	704	4637	177	B	EARTHMOVER	L-5
					60.8	20.4	93.2	-	27.7	182.6				
					1544	517	74	-	704	4637	161	A8	GRADER	L-5
					60.8	20.4	93.2	-	27.7	182.6				
23.5R25	DUAL STAR® */**	TBLS	19.50/2.5	-	1673	605	80	-	751	5025	201	A2	LOADER - DOZER	L-5
					65.9	23.8	100.8	-	29.6	197.8				
					1673	605	80	-	751	5025	185	B	EARTHMOVER	L-5
					65.9	23.8	100.8	-	29.6	197.8				
26.5R25	DUAL STAR® */**	TBLS	22.00/3.0	-	1791	700	86	-	801	5379	209	A2	LOADER - DOZER	L-5
					70.5	27.6	108.3	-	31.5	211.8				
					1791	700	86	-	801	5379	193	B	EARTHMOVER	L-5
					70.5	27.6	108.3	-	31.5	211.8				
29.5R25	12	TT / TBLS	25.00/3.5	-	1870	782	40	-	834	5581	216	A2	LOADER - DOZER	L-3
					73.6	30.8	50	-	32.8	219.7				
					1870	782	40	-	834	5581	200	B	EARTHMOVER	E-3
					73.6	30.8	50	-	32.8	219.7				

MAXIMUM TIRE LOAD [kg] [lb] versus INFLATION PRESSURE [bar] [PSI]																			
1.25	1.50	1.75	2.00	2.25	2.50	2.75	3.00	3.25	3.50	3.75	4.00	4.25	4.50	4.75	5.00	5.25	5.50	5.75	6.00
18	21	25	29	32	36	39	43	46	50	54	57	61	64	68	71	75	79	82	86
-	-	-	4750	5150	5600	6000	6300	6700	7100	7500	8000	8250	8750	9000	9500	9750	10000	10300	10900
-	-	-	10500	11400	12300	13200	13900	14800	15700	16500	17600	18200	19300	19800	20900	21500	22000	22700	24000
-	-	-	-	-	-	4375	4750	5000	5300	5600	5800	6150	6500	6700	6900	7300	-	-	-
-	-	-	-	-	-	9650	10500	11000	11700	12300	12800	13600	14300	14800	15200	16100	-	-	-
-	-	3150	3450	3875	4125	4375	4625	-	-	-	-	-	-	-	-	-	-	-	-
-	-	6950	7600	8550	9100	9650	10200	-	-	-	-	-	-	-	-	-	-	-	-
-	-	-	6000	6500	7100	7750	8250	8750	9250	9750	10300	10600	11200	11500	12150	12500	12850	13200	13600
-	-	-	13200	14300	15700	17100	18200	19300	20400	21500	22700	23400	24700	25400	26800	27600	28300	29100	30000
-	-	-	-	-	-	5600	6000	6500	6700	7100	7500	7750	8250	8500	9000	9250	-	-	-
-	-	-	-	-	-	12300	13200	14300	14800	15700	16500	17100	18200	18700	19800	20400	-	-	-
-	-	-	7500	8250	9000	9500	10300	10900	11500	12150	12850	13200	14000	14500	15000	15500	16000	16500	17000
-	-	-	16500	18200	19800	20900	22700	24000	25400	26800	28300	29100	30900	32000	33100	34200	35300	36400	37500
-	-	-	-	-	-	7100	7500	8000	8500	9000	9500	9750	10300	10600	11200	11500	-	-	-
-	-	-	-	-	-	15700	16500	17600	18700	19800	20900	21500	22700	23400	24700	25400	-	-	-
-	-	-	-	-	-	-	-	-	-	-	15500	16000	17000	17500	18000	19000	19500	20000	20600
-	-	-	-	-	-	-	-	-	-	-	34200	35300	37500	38600	39700	41900	43000	44100	45400
-	-	-	-	-	-	8500	9250	9750	10300	10900	11500	11800	12500	12850	13600	14000	-	-	-
-	-	-	-	-	-	18700	20400	21500	22700	24000	25400	26000	27600	28300	30000	30900	-	-	-



# CAMSO WHL 776R

Formerly Solideal SRLS

## HARD SURFACE DURABILITY AT ITS BEST

### FEATURES

- Extra-deep smooth tread
- Robust Dual-Star carcass
- Flat tread profile
- Heavy-duty sidewall construction

### BENEFITS

- Best durability and resistance to flat tires for extreme hard surface applications
- Provides excellent stability and enhanced loading capability
- Provides enhanced stability and even wear
- Protects against side impacts and deformation under heavy load

### PERFORMANCE

#### TIRE LIFE



#### PUNCTURE RESISTANCE



#### TRACTION



TIRE SIZE	PR	TT / TBLS	RIM SIZE		ACTUAL TIRE DIMENSIONS [mm] [in]						LOAD INDEX	SPEED SYMBOL	SERVICE	TRA CODE
			Recommended	Alternative	O.D.	O.W.	O.T.D. [mm] [32nd]	M.D.S.	S.L.R.	R.C.				
17.5R25	DUAL STAR® */**	TBLS	14.00/1.5	14.00/1.3 (DC); 13.00/1.4 (DC)	1402	443	75.2	-	646	4211	182	A2	LOADER - DOZER	L-5
					55.2	17.4	94.7	-	25.4	165.8				
					1402	443	75.2	-	646	4211	167	B	EARTHMOVER	L-5
					55.2	17.4	94.7	-	25.4	165.8				
					1402	443	75.2	-	646	4211	153	A8	GRADER	L-5
					55.2	17.4	94.7	-	25.4	165.8				
23.5R25	DUAL STAR® */**	TBLS	19.50/2.5	-	1673	623	80	-	762	5025	201	A2	LOADER - DOZER	L-5
					65.9	24.5	101	-	30.0	197.8				
					1673	623	80	-	762	5025	185	B	EARTHMOVER	L-5
					65.9	24.5	101	-	30.0	197.8				
26.5R25	DUAL STAR® */**	TBLS	22.00/3.0	-	1785	709	86	-	800	5361	209	A2	LOADER - DOZER	L-5
					70.3	27.9	108	-	31.5	211.1				
					1785	709	86	-	800	5361	193	B	EARTHMOVER	L-5
					70.3	27.9	108	-	31.5	211.1				

MAXIMUM TIRE LOAD [kg] [lb] versus INFLATION PRESSURE [bar] [PSI]																			
1.25	1.50	1.75	2.00	2.25	2.50	2.75	3.00	3.25	3.50	3.75	4.00	4.25	4.50	4.75	5.00	5.25	5.50	5.75	6.00
18	21	25	29	32	36	39	43	46	50	54	57	61	64	68	71	75	79	82	86
-	-	-	3650	4000	4250	4625	4850	5300	5600	5800	6000	6150	6500	6700	7100	7300	7500	7750	8000
-	-	-	8050	8800	9350	10200	10700	11700	12300	12800	13200	13600	14300	14800	15700	16100	16500	17100	17600
-	-	-	-	-	-	3350	3550	3750	4000	4125	4375	4625	4750	5000	5150	5450	-	-	-
-	-	-	-	-	-	7400	7850	8250	8800	9100	9650	10200	10500	11000	11400	12000	-	-	-
-	-	2360	2650	2900	3075	3350	3650	-	-	-	-	-	-	-	-	-	-	-	-
-	-	5200	5840	6400	6800	7400	8050	-	-	-	-	-	-	-	-	-	-	-	-
-	-	-	6000	6500	7100	7750	8250	8750	9250	9750	10300	10600	11200	11500	12150	12500	12850	13200	13600
-	-	-	13200	14300	15700	17100	18200	19300	20400	21500	22700	23400	24700	25400	26800	27600	28300	29100	30000
-	-	-	-	-	-	5600	6000	6500	6700	7100	7500	7750	8250	8500	9000	9250	-	-	-
-	-	-	-	-	-	12300	13200	14300	14800	15700	16500	17100	18200	18700	19800	20400	-	-	-
-	-	-	7500	8250	9000	9500	10300	10900	11500	12150	12850	13200	14000	14500	15000	15500	16000	16500	17000
-	-	-	16500	18200	19800	20900	22700	24000	25400	26800	28300	29100	30900	32000	33100	34200	35300	36400	37500
-	-	-	-	-	-	7100	7500	8000	8500	9000	9500	9750	10300	10600	11200	11500	-	-	-
-	-	-	-	-	-	15700	16500	17600	18700	19800	20900	21500	22700	23400	24700	25400	-	-	-



# CAMSO ADT 753R

Formerly Solideal SRAT

## RADIAL PERFORMANCE MEETS HIGH TRACTION

### FEATURES

- Heavy-duty Dual-Star carcass
- Non-directional tread pattern with optimized lug-to-void ratio
- Deep tread depth
- Premium rubber compounds

### BENEFITS

- Optimizes stability for articulated dump truck applications
- Increases traction and durability in off-road conditions
- Enhances traction in off-road conditions
- Reduces heat build-up

### PERFORMANCE

#### TIRE LIFE



#### PUNCTURE RESISTANCE



#### TRACTION



TIRE SIZE	PR	TT / TBLS	RIM SIZE		ACTUAL TIRE DIMENSIONS [mm] [in]						LOAD INDEX	SPEED SYMBOL	SERVICE	TRA CODE
			Recommended	Alternative	O.D.	O.W.	O.T.D. [mm] [32nd]	M.D.S.	S.L.R.	R.C.				
20.5R25	DUAL STAR® */**	TBLS	17.00/2.0	-	1485	524	31	-	663	4460	193	A2	LOADER - DOZER	L-3
					58.5	20.6	39	-	26.1	175.6				
					1485	524	31	-	663	4460	177	B	EARTHMOVER	E-3
					58.5	20.6	39	-	26.1	175.6				
					1485	524	31	-	663	4460	161	A8	GRADER	G-3
					58.5	20.6	39	-	26.1	175.6				
23.5R25	DUAL STAR® */**	TBLS	19.50/2.5	-	1615	614	29	-	716	4850	201	A2	LOADER - DOZER	L-3
					63.6	24.2	36.5	-	28.2	190.9				
					1615	614	29	-	716	4850	185	B	EARTHMOVER	E-3
					63.6	24.2	36.5	-	28.2	190.9				
26.5R25	DUAL STAR® */**	TBLS	22.00/3.0	-	1736	688	33	-	767	5236	209	A2	LOADER - DOZER	L-3
					68.3	27.1	41.6	-	30.2	206.1				
					1736	688	33	-	767	5236	193	B	EARTHMOVER	E-3
					68.3	27.1	41.6	-	30.2	206.1				
29.5R25	DUAL STAR® */**	TBLS	25.00/3.5	-	1871	777	38	-	817	5619	216	A2	LOADER - DOZER	L-3
					73.7	30.6	47.9	-	32.2	221.2				
					1871	777	38	-	817	5619	200	B	EARTHMOVER	E-3
					73.7	30.6	47.9	-	32.2	221.2				

MAXIMUM TIRE LOAD [kg] [lb] versus INFLATION PRESSURE [bar] [PSI]																			
1.25	1.50	1.75	2.00	2.25	2.50	2.75	3.00	3.25	3.50	3.75	4.00	4.25	4.50	4.75	5.00	5.25	5.50	5.75	6.00
18	21	25	29	32	36	39	43	46	50	54	57	61	64	68	71	75	79	82	86
-	-	-	4750	5150	5600	6000	6300	6700	7100	7500	8000	8250	8750	9000	9500	9750	10000	10300	10900
-	-	-	10500	11400	12300	13200	13900	14800	15700	16500	17600	18200	19300	19800	20900	21500	22000	22700	24000
-	-	-	-	-	-	4375	4750	5000	5300	5600	5800	6150	6500	6700	6900	7300	-	-	-
-	-	-	-	-	-	9650	10500	11000	11700	12300	12800	13600	14300	14800	15200	16100	-	-	-
-	-	3150	3450	3875	4125	4375	4625	-	-	-	-	-	-	-	-	-	-	-	-
-	-	6950	7600	8550	9100	9650	10200	-	-	-	-	-	-	-	-	-	-	-	-
-	-	-	6000	6500	7100	7750	8250	8750	9250	9750	10300	10600	11200	11500	12150	12500	12850	13200	13600
-	-	-	13200	14300	15700	17100	18200	19300	20400	21500	22700	23400	24700	25400	26800	27600	28300	29100	30000
-	-	-	-	-	-	5600	6000	6500	6700	7100	7500	7750	8250	8500	9000	9250	-	-	-
-	-	-	-	-	-	12300	13200	14300	14800	15700	16500	17100	18200	18700	19800	20400	-	-	-
-	-	-	7500	8250	9000	9500	10300	10900	11500	12150	12850	13200	14000	14500	15000	15500	16000	16500	17000
-	-	-	16500	18200	19800	20900	22700	24000	25400	26800	28300	29100	30900	32000	33100	34200	35300	36400	37500
-	-	-	-	-	-	7100	7500	8000	8500	9000	9500	9750	10300	10600	11200	11500	-	-	-
-	-	-	-	-	-	15700	16500	17600	18700	19800	20900	21500	22700	23400	24700	25400	-	-	-
-	-	-	-	-	-	-	-	-	-	-	15500	16000	17000	17500	18000	19000	19500	20000	20600
-	-	-	-	-	-	-	-	-	-	-	34200	35300	37500	38600	39700	41900	43000	44100	45400
-	-	-	-	-	-	8500	9250	9750	10300	10900	11500	11800	12500	12850	13600	14000	-	-	-
-	-	-	-	-	-	18700	20400	21500	22700	24000	25400	26000	27600	28300	30000	30900	-	-	-

# CAMSO WHL 775



## A PREMIUM WHEEL LOADER TIRE DURABILITY SOLUTION

### FEATURES

- Extra-deep L5 lug tread
- Heavy-duty carcass
- Heavy-duty sidewall construction
- Contoured lug base

### BENEFITS

- Enhances durability and resistance to flat tires for extreme mixed and hard surface applications
- Increases stability and side impact resistance
- Protects against side impacts and deformation under heavy load
- Promotes stone ejection and resistance to cracking

### PERFORMANCE

#### TIRE LIFE



#### PUNCTURE RESISTANCE



#### TRACTION



TIRE SIZE	PR	TL / TT	RIM SIZE		ACTUAL TIRE DIMENSIONS [mm] [in]			LOAD INDEX	SPEED SYMBOL	SERVICE	TRA CODE	APPLICATION
			Recommended	Alternative	O.D.	O.W.	O.T.D. [mm] [32nd]					
17.5-25	16	TL	14.00/1.5	-	1405	448	61	177	A2	LOADER - DOZER	L-5	-
					55.3	17.6	77					
20.5-25	20	TL	17.00/2.0	-	1566	532	77	186	A2	LOADER - DOZER	L-5	-
					61.7	20.9	97					
23.5-25	20	TL	19.50/2.5	-	1670	596	87	191	A2	LOADER - DOZER	L-5	-
					65.7	23.5	110					

INFLATION PRESSURE [bar] [PSI]	MAXIMUM TIRE LOAD [kg] [lb]										
	STATIC	BREAK-OUT	CREEP	5 km/h 3 mph	10 km/h 6 mph	15 km/h 9 mph	20 km/h 12 mph	25 km/h 15 mph	30 km/h 18 mph	35 km/h 21 mph	40 km/h 24 mph
4.75	11700	-	9500	8300	7300	6350	6150	5850	5600	5400	5100
6.9	25795	-	20945	18300	16095	14000	13560	12895	12345	11905	11245
4.50	15200	-	12400	10800	9500	8250	8000	7600	7300	7050	6650
6.5	33510	-	27335	23810	20945	18190	17635	16755	16095	15545	14660
3.75	17400	-	14200	12400	10900	9500	9150	8700	8400	8050	7650
5.4	38360	-	31305	27335	24030	20945	20170	19180	18520	17745	16865

















**CAMSO  
WL**

**HIGH PERFORMANCE. MAXIMUM PROTECTION**

**FEATURES**

- Heavy-duty carcass
- Large casing design
- Extra-deep lug depth
- Premium rubber compounds

**BENEFITS**

- Provides best stability and side impact resistance
- Improves ride quality and stability
- Provides best durability and traction
- Provides best durability and cut resistance

**PERFORMANCE**

TIRE LIFE



PUNCTURE RESISTANCE



TRACTION



TIRE SIZE	PR	TT/TBLS	TUBE	VALVE	FLAP	RIM SIZE		ACTUAL TIRE DIMENSIONS [mm] [in]						LOAD INDEX	SPEED SYMBOL
						Recommended	Alternative	O.D.	O.W.	O.T.D. [mm] [32nd]	M.D.S.	S.L.R.	R.C.		
8.25-20	14	TT	8.25/9.00-20	V03-02-14	8.25/9.00/10.00/12.00-20	6.50	7.00	1000	252	26	272	486	2985	148	A2
								39.4	9.9	33	10.7	19.1	117.5		
								1000	252	26	272	486	2985		
								39.4	9.9	33	10.7	19.1	117.5		
9.00-20	14	TT	8.25/9.00-20	V03-02-14	8.25/9.00/10.00/12.00-20	7.00	6.50/7.50	1039	267	27	301	485	3101	153	A2
								40.9	10.5	34	11.9	19.1	122.1		
								1039	267	27	301	485	3101		
								40.9	10.5	34	11.9	19.1	122.1		
10.00-20	16	TT	10.00/11.00-20	V03-02-14	8.25/9.00/10.00/12.00-20	7.50	7.00/8.00	1070	284	26	316	496	3226	158	A2
								42.1	11.2	33	12.4	19.5	127.0		
								1070	284	26	316	496	3226		
								42.1	11.2	33	12.4	19.5	127.0		
11.00-20	16	TT	10.00/11.00-20	V03-02-14	8.25/9.00/10.00/12.00-20	8.00	8.50	1064	280	22	334	512	3376	160	A2
								41.9	11.0	28	13.1	20.2	132.9		
								1064	280	22	334	512	3376		
								41.9	11.0	28	13.1	20.2	132.9		

MAXIMUM TIRE LOAD [kg] [lb]					
All surfaces			Improved surfaces		
Static	Creep	0-8 km/h 0-5 mph	16 km/h 6 mph	25 km/h 16 mph	45 km/h 28 mph
6105	5120	3645	3150	2600	2325
13500	11300	8050	6950	5750	5150
9.00 bar	9.00 bar	8.00 bar	8.00 bar	7.50 bar	7.50 bar
129 PSI	129 PSI	114 PSI	114 PSI	107 PSI	107 PSI
6990	5860	4170	3605	2975	2660
15450	12950	9200	7950	6550	5850
8.50 bar	8.50 bar	7.50 bar	7.50 bar	7.00 bar	7.00 bar
121 PSI	121 PSI	107 PSI	107 PSI	100 PSI	100 PSI
8215	6890	4900	4240	3500	3125
18150	15200	10800	9350	7750	6900
8.50 bar	8.50 bar	8.00 bar	8.00 bar	7.50 bar	7.50 bar
121 PSI	121 PSI	114 PSI	114 PSI	107 PSI	107 PSI
8700	7300	5200	4500	3700	3300
19200	16100	11500	9950	8150	7300
8.50 bar	8.50 bar	7.75 bar	7.75 bar	7.00 bar	7.00 bar
121 PSI	121 PSI	111 PSI	111 PSI	100 PSI	100 PSI



# CAMSO WEX 552

Formerly known as Solideal WEX

## PERFORMANCE AND QUALITY YOU CAN COUNT ON

### FEATURES

- Robust carcass
- Advanced rubber compounds
- Deep lug depth

### BENEFITS

- Enhances stability and side impact resistance
- Improves durability and cut resistance
- Enhances durability and traction

### PERFORMANCE

#### TIRE LIFE



#### PUNCTURE RESISTANCE



#### TRACTION



TIRE SIZE	PR	TT/TBLS	TUBE	VALVE	FLAP	RIM SIZE		ACTUAL TIRE DIMENSIONS [mm] [in]						LOAD INDEX	SPEED SYMBOL
						Recommended	Alternative	O.D.	O.W.	O.T.D. [mm] [32nd]	M.D.S.	S.L.R.	R.C.		
9.00-20	14	TT	8.25/9.00-20	V03-02-14	8.25/9.00/10.00/12.00-20	7.00	6.50/7.50	1022	267	19.5	302	448	3090	153	A2
								40.2	10.5	25	11.9	17.6	121.7		
								1022	267	19.5	302	448	3090		
								40.2	10.5	25	11.9	17.6	121.7		
10.00-20	14	TT	10.00/11.00-20	V03-02-14	8.25/9.00/10.00/12.00-20	7.50	7.00/8.00	1064	281	21	325	461	3208	155	A2
								41.9	11.1	26	12.8	18.1	126.3		
								1064	281	21	325	461	3208		
								41.9	11.1	26	12.8	18.1	126.3		
10.00-20	16	TT	10.00/11.00-20	V03-02-14	8.25/9.00/10.00/12.00-20	7.50	7.00/8.00	1064	281	21	325	461	3208	158	A2
								41.9	11.1	26	12.8	18.1	126.3		
								1064	281	21	325	461	3208		
								41.9	11.1	26	12.8	18.1	126.3		

MAXIMUM TIRE LOAD [kg] [lb]					
All surfaces			Improved surfaces		
Static	Creep	0-8 km/h 0-5 mph	16 km/h 6 mph	25 km/h 16 mph	45 km/h 28 mph
6990	5860	4170	3605	2975	2660
15450	12950	9200	7950	6550	5850
8.50 bar	8.50 bar	7.50 bar	7.50 bar	7.00 bar	7.00 bar
121 PSI	121 PSI	107 PSI	107 PSI	100 PSI	100 PSI
7455	6255	4450	3850	3175	2840
16450	13800	9800	8500	7000	6250
7.5 bar	7.5 bar	7.0 bar	7.0 bar	6.0bar	6.0bar
107 PSI	107 PSI	100 PSI	100 PSI	87 PSI	87 PSI
8215	6890	4900	4240	3500	3125
18150	15200	10800	9350	7750	6900
8.50 bar	8.50 bar	8.00 bar	8.00 bar	7.50 bar	7.50 bar
121 PSI	121 PSI	114 PSI	114 PSI	107 PSI	107 PSI





# CAMSO CMP 533

## COMPACTION PERFORMANCE AND DURABILITY SOLUTION

### FEATURES

- Optimized tread pattern
- Robust carcass design
- Flatter tread profile
- Engineered tread profile with hauler steps and shoulder lugs

### BENEFITS

- Minimizes ground pressure and damage for better compaction performance
- Enhances side impact resistance for fewer flats
- Ensures even tread wearing for greater durability
- Enhances traction for improved performance

### PERFORMANCE



TIRE SIZE	PR	TT/TBLS	TUBE	VALVE	FLAP	RIM SIZE		ACTUAL TIRE DIMENSIONS [mm] [in]				LOAD INDEX	SPEED SYMBOL	TRA CODE	IP [bar] [PSI]	LOAD CAPACITY [kg] [lb]	
						Recommended	Alternative	O.D.	O.W.	M.D.S.	S.L.R.					10 km/h 6 mph	15 km/h 9 mph
23.1-26 IND	12	TBLS	10.00/11.00-20	V5-15-1	8.25/9.00/10.00/11.00/12.00-20	DW20B	DW20A; TW20B	1555	611,0	-	688.0	162	A8	R-3	1.9	5940	5370
								388,8	24,1	-	271					13100	11850



# CAMSO CMP 576

Formerly Solideal SM C1

## EXCELLENT COMPACTION PERFORMANCE

### FEATURES

- Aggressive curved R1 tread pattern
- Heavy-duty reinforced sidewall
- Hauler stepped tread design

### BENEFITS

- Maximizes traction and improves ride quality
- Provides side impact protection for fewer flat tires
- Maximizes tread cleanout in off-road conditions for improved traction

### PERFORMANCE



TIRE SIZE	PR	TT/TBLS	TUBE	VALVE	FLAP	RIM SIZE		ACTUAL TIRE DIMENSIONS [mm] [in]				LOAD INDEX	SPEED SYMBOL	TRA CODE	IP [bar] [PSI]	LOAD CAPACITY [kg] [lb]	
						Recommended	Alternative	O.D.	O.W.	M.D.S.	S.L.R.					10 km/h 6 mph	15 km/h 9 mph
7.50-15 NHS	14	TT	700/750/815-17	TR 440	7.00/7.50/8.25-15	6.00	6.50	788	214	226	362	136	A3	C-1	8.50	2835	2270
								31.0	8.4	8.9	14.3					121	6250
8.50/90-15K	6	TBLS	-	-	-	6.00	5.5F	761	217	-	688.0	120	A3	C-1	3.50	1770	1400
								30.0	8.5	-	271					50	3900
11.00-20 NHS	16	TT	10.00/11.00-20	V3-02-15 TR 444	8.25/9.00/10.00/11.00/12.00-20	8.00	8.50	1056	287	313	493	158	A3	C-1	7.40	5445	4355
								41.6	11.3	12.3	19.4					106	12000



# CAMSO SKS 511

Formerly Solideal SKS R1

## OFF-ROAD TRACTION AT ITS BEST

### FEATURES

- Aggressive curved R1 tread pattern
- Heavy-duty reinforced sidewall
- Hauler stepped tread design

### BENEFITS

- Maximizes traction and improves ride quality
- Provides side impact protection for fewer flat tires
- Maximizes tread cleanout in off-road conditions for improved traction

### PERFORMANCE

#### TIRE LIFE



#### PUNCTURE RESISTANCE



#### TRACTION



TIRE SIZE	PR	RIM SIZE		ACTUAL TIRE DIMENSIONS [mm] [inches]						TT/ TBLS	LOAD INDEX	SPEED SYMBOL	TRA CODE	INFLATION PRESSURE [bar] [PSI]	MAXIMUM TIRE LOAD [kg] [lb]			
		Recommended	Alternative	O.D.	O.W.	O.T.D. [mm] [32nd]	M.D.S.	S.L.R.	R.C.						Static	Creep	8 km/h	16 km/h
26x12-12	8	10.50	8.50/8.50JA	667	300	21.0	325	302	2024	TBLS	119	A2	R-1	3.50	2160	1580	1370	1080
				26.3	11.8	26	12.8	11.9	79.7					50	4750	3500	3000	2400
29x12.5-15	8	10LB	-	748	309	18.0	389	339	2255	TBLS	123	A2	R-1	3.10	2440	1780	1545	1220
				29.4	12.2	23	15.3	13.3	88.8					44	5400	3950	3400	2700
31x15.5-15	8	13.00	13LB	804	380	21.0	409	370	2424	TBLS	126	A2	R-1	3.10	2670	1940	1690	1340
				31.7	15.0	26	16.1	14.6	95.4					44	5900	4300	3750	2950
26x12-16.5 (300/40-16.5)	10	9.75	-	659	285	21.0	299	297	2014	TBLS	124	A2	R-1	4.00	2580	1870	1630	1290
				25.9	11.2	26	11.8	11.7	79.3					57	5700	4150	3600	2850
33x15.5-16.5	10	12.00	-	830	371	23.0	396	373	2488	TBLS	143	A2	R-1	3.40	4310	3130	2725	2150
				32.7	14.6	29	15.6	14.7	98.0					49	9500	6900	6000	4750

# CONSTRUCTION TRACKS

# CAMSO MEX HXD



## EXTREME RESISTANCE TO SEVERE CONDITIONS

### FEATURES

- Patented 3S internal iron core
- High-tensile, rubber sealed steel cables protected by heavy-duty carcass and tread
- Curbshield technology with heavy-duty carcass
- Patented 3S internal iron core

### BENEFITS

- Avoids unexpected downtime on job site and the beginning of the degradation process
- Resists carcass punctures and cable corrosion to extend service life
- Maximizes service life prior to track degradation process triggered by edge cutting leading to iron core corrosion
- Minimizes vibrations for better ride quality and lower maintenance cost

### PERFORMANCE

#### TREAD LIFE



#### FAILURE RESISTANCE



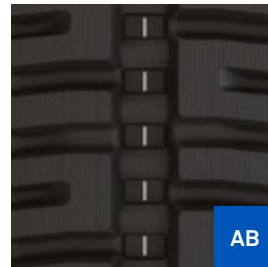
#### TRACTION



### TREAD PATTERNS



AH



AB

# CAMSO MEX HXD (cont.)



WIDTH	PITCH	TREAD	GUIDING	METAL PIECE NAME	CARCASS THICKNESS	LUG HEIGHT	METAL PIECE TYPE	METAL PIECE SPECIFICATION
230	48	AH	I	KA	26.5	24.5	3S	STANDARD
300	55	AH	I	SA	35	27.5	3S	NARROW
300	55	AH	I	WA	35	27.5	3S	WIDE
400	72.5	AH	I	WA	43	27.5	3S	NARROW
400	72.5	AH	I	EA	43	27.5	3S	WIDE
400	72.5	AH	J	EA	45.5	27.5	3S RAIL TYPE	STANDARD
400	75.5	AH	J	WA	47	27.5	3S OFFSET RAIL TYPE	STANDARD
450	71	AH	I	JA	48	30	3S	STANDARD
450	76	AH	I	JA	48	30	3S	STANDARD
450	81	AH	I	OA	46.5	30.5	3S	NARROW
450	81	AH	I	AA	46.5	30.5	3S	WIDE
450	83.5	AH	J	UA	47	27.5	3S OFFSET RAIL TYPE	STANDARD
485	92	AH	I	D	62.5	27	OFFSET	STANDARD
500	92	AB	I	D	58	30	STANDARD	STANDARD

# CAMSO MEX SD



## PREDICTABLE SERVICE LIFE AND PERFORMANCE

### FEATURES

- Patented 3S internal iron core
- High-tensile, rubber sealed steel cables
- Curbshield technology
- Patented 3S internal iron core

### BENEFITS

- Avoids unexpected downtime on job site and the beginning of the degradation process
- Resists carcass punctures and cable corrosion to extend service life
- Extends service life prior to track degradation process triggered by edge cutting leading to iron core corrosion
- Minimizes vibrations for better ride quality and lower maintenance cost

### PERFORMANCE

#### TREAD LIFE



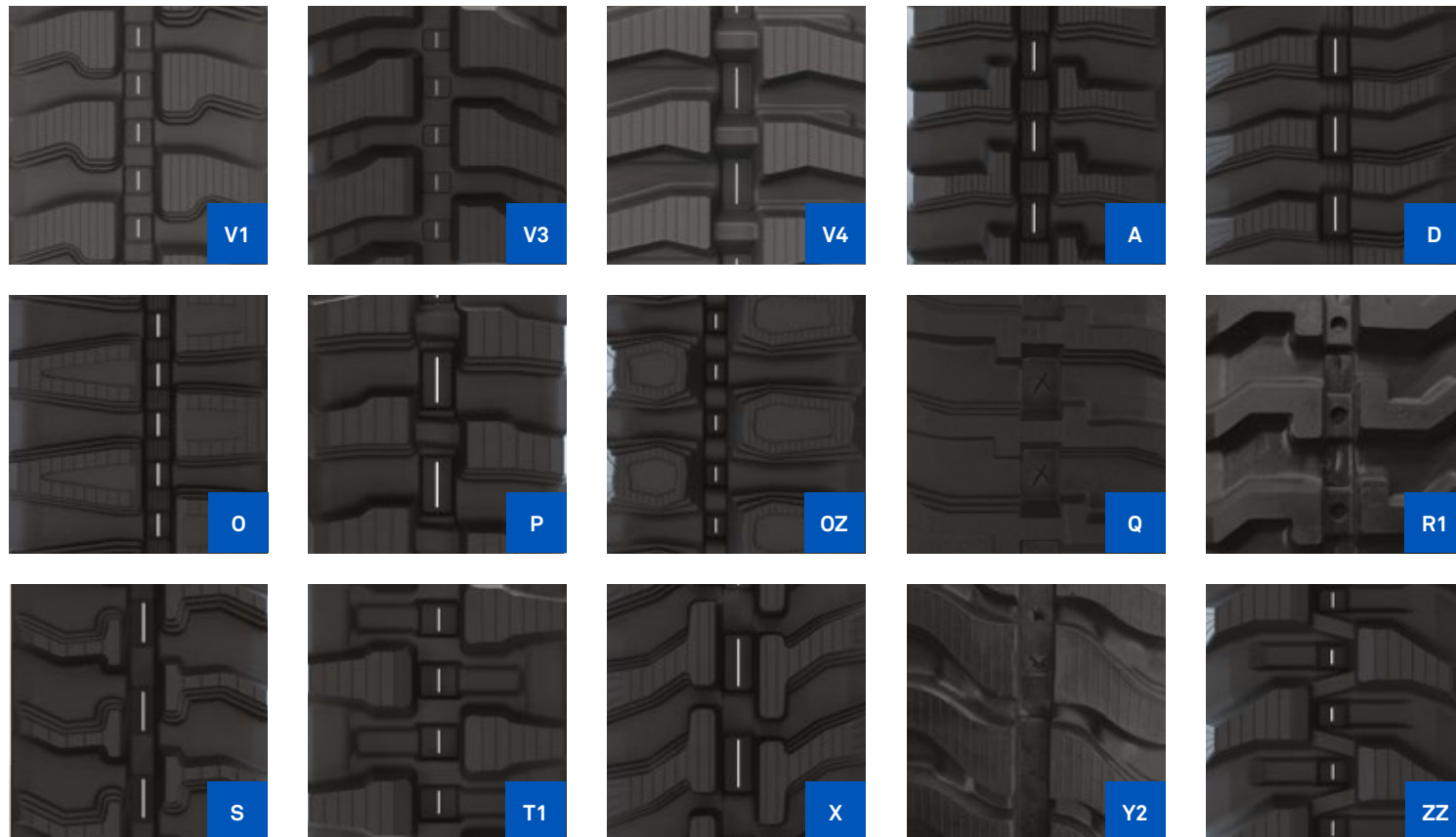
#### FAILURE RESISTANCE



#### TRACTION



## TREAD PATTERNS



# CAMSO MEX SD (cont.)



WIDTH	PITCH	TREAD	GUIDING	METAL PIECE NAME	CARCASS THICKNESS	LUG HEIGHT	METAL PIECE TYPE	METAL PIECE SPECIFICATION
130	72	A	A	RB	18	15	STANDARD	STANDARD
180	60	S	A	F	16	13	STANDARD	STANDARD
		X	A	R	20	15	STANDARD	NARROW
	72	X	A	P	21	17	STANDARD	WIDE
200	72	P	B	R	21	17	RAIL TYPE	STANDARD
		A	A	P	22	15	STANDARD	WIDE
		X	A	R	20	15	STANDARD	NARROW
230	72	X	A	P	24	18	STANDARD	WIDE
		V4	J	P	24.5	17	RAIL TYPE	WIDE
		A	A	P	22	18	STANDARD	WIDE
250	72	B	A	P	22	18	STANDARD	WIDE
		V4	J	P2	21.5	17	RAIL TYPE	WIDE
		V1	I	KA	22	18	3S	STANDARD
300	48	T1	J	K	26	22	RAIL TYPE	STANDARD
		ZZ	J	K	22.5	23	RAIL TYPE	STANDARD
		B	A	P	24	17	STANDARD	WIDE
320	72	D	A	P	24	17	STANDARD	WIDE
		R1	A	PR	30	18	STANDARD	WIDE
		V1	I	KA	27	20	3S	STANDARD
350	52.5	V1	I	SA	30	24	3S	NARROW
		V1	I	WA	30	24	3S	WIDE
		V1	I	SA	31	23	3S	NARROW
400	52.5	V1	I	WA	31	23	3S	WIDE
		V1	J	SA	33	25	3S RAIL TYPE	NARROW
		Y2	J	SF	36	25	RAIL TYPE	STANDARD
450	55.5	O	J	SA	34	25	3S OFFSET - RAIL TYPE	NARROW
		Q	A	W	39	25	STANDARD	STANDARD
		V1	J	WA	39	25	3S RAIL TYPE	WIDE
500	54.5	V1	I	WF	36	22	STANDARD	WIDE
		V1	I	EA	40	25	3S	WIDE
		V1	I	WA	40	25	3S	NARROW
550	72.5	V1	J	EA	42	25	3S RAIL TYPE	WIDE
		V1	I	JA	46	27	3S	STANDARD
		V3	I	JS	52	30	STANDARD	STANDARD
600	71	V1	I	AA	42	28	3S	WIDE
		V1	I	OA	42	28	3S	NARROW
		ZZ	I	EA-V	57	30	3S	STANDARD
650	81	V1	I	DA	58	33	3S	STANDARD
		V1	I	DA	58	33	3S	STANDARD
		V1	I	DA	58	33	3S	STANDARD



# CAMSO CTL HXD

## THE BEST TRACK FOR DURABILITY AND PERFORMANCE

### FEATURES

- Single-cure technology with next generation rubber compound
- Trackguard iron core with heavy-duty carcass
- Endless high-tensile steel cables
- Optimized tread pattern with next generation rubber compound

### BENEFITS

- Promotes even tread wearing for long, predictable tread life
- Improves rolling path life for reduced failures and enhanced durability
- Eliminates unexpected downtime due to cable/track breakage
- Maintains excellent traction throughout tread life

### PERFORMANCE



### TREAD PATTERNS



WIDTH	LINKS	PITCH	TREAD	GUIDING	METAL PIECE	METAL PIECE TYPE
180	39	72	HH	B	R	CONVENTIONAL
180	39, 41, 44, 45	72	ST	J	R	RAIL TYPE
230	39, 41, 44, 45	72	ST	J	R	RAIL TYPE
250	39	72	HH	B	R	CONVENTIONAL
320	45, 48, 49, 50, 52, 53, 54, 56	86	HH	B	E	CONVENTIONAL
320	46, 48, 52	86	HH	J	W	RAIL TYPE
400	49, 50, 52, 53, 54, 55, 56, 60	86	HH	B	E	CONVENTIONAL
450	42, 52, 55, 56, 59, 60	86	HH	B	E	CONVENTIONAL
450	48, 50	100	HH	J	E	RAIL TYPE
450	58	86	HA	B	E	CONVENTIONAL



# CAMSO CTL SD

## ALL-SEASON TRACTION AND DURABILITY

### FEATURES

- Single-cure technology with advanced rubber compound
- Trackguard iron core
- Endless high-tensile steel cables
- Versatile self-cleaning stepped tread design

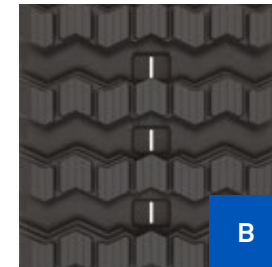
### BENEFITS

- Promotes even tread wearing for long, predictable tread life
- Improves rolling path life for reduced failures and enhanced durability
- Eliminates unexpected downtime due to cable/track breakage
- Maintains good traction throughout tread life

### PERFORMANCE



### TREAD PATTERNS



WIDTH	LINKS	PITCH	TREAD	GUIDING	METAL PIECE	METAL PIECE TYPE
320	45, 46, 48, 49, 50, 52, 53, 54, 56	86	B	B	E	CONVENTIONAL
320	46, 48, 52	86	B	J	W	RAIL TYPE
400	49, 50, 52, 53, 54, 55, 56	86	B	B	E	CONVENTIONAL
450	48, 50	100	B	J	E	RAIL TYPE
450	52, 55, 56, 58, 59, 60, 63, 65	86	B	B	E	CONVENTIONAL



# CAMSO MTL HXD

## ENHANCED DURABILITY AND PROTECTION

### FEATURES

- Single cure technology combined with duradrive internal fabric reinforced design
- Heavy duty carcass construction
- Versatile tread pattern matched with advanced rubber compound

### BENEFITS

- Protects against drive lug failures to add an extra season and complete tread life utilization
- Increases lateral stability to eliminate detracking for less downtime
- Maintains good traction throughout tread life

### PERFORMANCE

#### TREAD LIFE



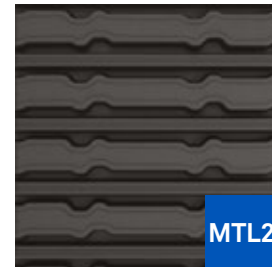
#### FAILURE RESISTANCE



#### TRACTION



## TREAD PATTERNS



TRACK WIDTH [in] [mm]		TRACK LENGTH [in] [mm]		PITCH [in] [mm]		NUMBER OF DRIVE LUG	TREAD
15	381	166	4216	4	100		
18	457	200	5080	4	100	51	MTL2
18	457	220	5588	4	100	56	MTL2
18	457	201	5105	4	100	51	MTL2



# CAMSO OTT HXD

## QUICK MOUNT ATTACHMENT FOR TRACKED PERFORMANCE

### FEATURES

- Full rubber track
- Embedded iron core with engineered wing design
- Full width, continuous rubber track footprint
- Internal traction rib

### BENEFITS

- Allows operation on asphalt, concrete and turf surfaces without damage or marking
- Avoids detracking like a non-reinforced all rubber OTT
- Increases flotation by 5 times higher than tires and by, at least, twice as much over standard steel track
- Provides high traction between tire and track and prevents tire wear

### PERFORMANCE

#### TREAD LIFE



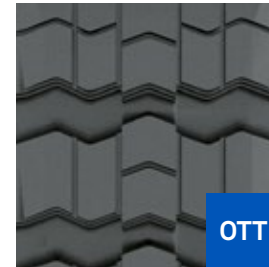
#### FAILURE RESISTANCE



#### TRACTION



## TREAD PATTERNS



TIRE WIDTH	RIM DIAMETER	LINKS
10	16.5	25, 26, 27, 28, 29, 31
12	16.5	29, 30, 31, 32, 33



# CAMSO HXD SMOOTH

## DURABILITY AT ITS BEST

### FEATURES

- Single-cure technology with next generation rubber compound
- Optimized multi layer internal construction
- Smooth tread pattern with heavy duty carcass

### BENEFITS

- Promotes even tread wearing for long, predictable tread life
- Improves weight distribution with better lateral stiffness
- Increases track life

### PERFORMANCE

#### TREAD LIFE



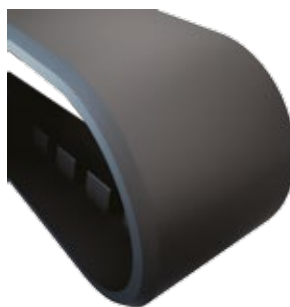
#### FAILURE RESISTANCE



#### TRACTION



### SIDE VIEW



WIDTH		LENGHT		TREAD	CARCASS THICKNESS		TREAD THICKNESS		TOTAL THICKNESS	
in	mm	in	mm		in	mm	in	mm	in	mm
16	406	272.5	6921	Smooth	1.2	30	0.8	21	2	51
15.75	400	317	8049	Smooth	1.1	27.5	1.2	30.5	2.3	58
18	457	317	8049	Smooth	1.1	27.5	1.2	30.5	2.3	58



# CAMSO HXD CHEVRON

## DURABILITY MEETS TRACTION

### FEATURES

- Single-cure technology with next generation rubber compound
- Optimized multi layer internal construction
- Chevron type tread pattern

### BENEFITS

- Promotes even tread wearing for long, predictable tread life
- Improves weight distribution with better lateral stiffness
- Provides high traction in softer surfaces

### PERFORMANCE

#### TREAD LIFE



#### FAILURE RESISTANCE



#### TRACTION



### SIDE VIEW



WIDTH		LENGHT		TREAD	CARCASS THICKNESS		TREAD THICKNESS		TOTAL THICKNESS	
in	mm	in	mm		in	mm	in	mm	in	mm
16	406	272.5	6921	Chevron	0.9	23.5	1.5	38	2.4	61.5
15.75	400	317	8049	Chevron	0.9	23.5	1.5	38	2.4	61.5
18	457	317	8049	Chevron	0.9	23.5	1.5	38	2.4	61.5



# CAMSO CARRIER HXD

## TOP PERFORMANCE AND UPTIME

### FEATURES

- First and only endless steel cable in the market
- Trackguard iron core
- Straight bar tread pattern
- Next generation rubber compound

### BENEFITS

- Protects from joint failures to avoid unexpected downtime
- Improves rolling path life for reduced failures and enhanced durability
- Provides optimal traction
- Promotes even tread wearing for long, predictable tread life

### PERFORMANCE

#### TREAD LIFE



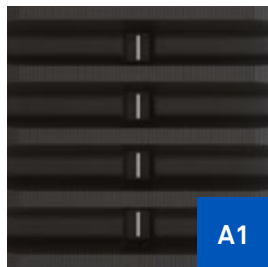
#### FAILURE RESISTANCE



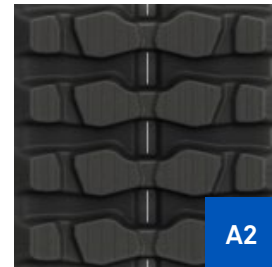
#### TRACTION



## TREAD PATTERNS



A1



A2

WIDTH	PITCH	LINKS	TREAD	GUIDING	METAL PIECE	CARCASS THICKNESS	LUG HEIGHT	METAL PIECE TYPE
350	100	53, 56, 58, 80	A1	B	E	42	27	STANDARD
700	100	96, 98	A2	B	T	66	32	STANDARD
750	150	66	A2	B	T	80	36	STANDARD



# COMPLETE LINE OVERVIEW

## SKID STEER LOADERS



CAMSO SKS 775 CAMSO SKS 753 CAMSO SKS 732 CAMSO SKS 532 CAMSO SKS 793S CAMSO HAULER SKZ CAMSO SKS 792S

## SKID STEER LOADERS (cont.)



CAMSO SKS 796S CAMSO HAULER SKS CAMSO XTRA WALL CAMSO SKS 774 CAMSO SKS 332 CAMSO SKS 782S CAMSO SKS 786S

## BACKHOE LOADERS



CAMSO BHL 753 CAMSO SL R4 CAMSO BHL 532 CAMSO 4L R1 CAMSO BHL 530

## TELEHANDLERS



CAMSO TLH 792S CAMSO SL G3 CAMSO SL G2 CAMSO TLH 532 CAMSO TM R4 CAMSO 4L I3

## WHEEL LOADERS | ARTICULATED DUMP TRUCKS | MOTOR GRADERS



CAMSO WHL 753R CAMSO WHL 775R CAMSO WHL 776R CAMSO ADT 753R

RADIAL

## WHEEL LOADERS | ARTICULATED DUMP TRUCKS | MOTOR GRADERS (cont.)



CAMSO WHL 775 CAMSO SKZ CAMSO LM L3 CAMSO LM L2 CAMSO WHL 773

## WHEEL EXCAVATORS



CAMSO WL CAMSO WEX 552

## COMPACTION EQUIPMENT



CAMSO CMP 533 CAMSO CMP 576

## TRUCK MOUNTED FORKLIFTS



CAMSO SKS 511

## MINI-EXCAVATORS



CAMSO MX HXD

## COMPACT TRACK LOADERS



CAMSO MX SD



CAMSO CTL HXD



CAMSO CTL SD

## MULTI-TERRAIN LOADERS



CAMSO MTL HXD

## OTT FOR SKID STEER LOADERS



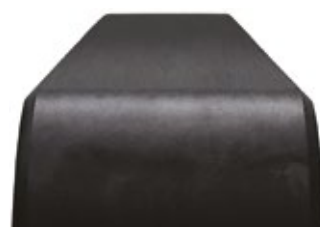
CAMSO OTT HXD

## CARRIERS

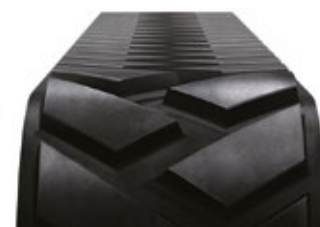


CAMSO CARRIER HXD

## PAVERS

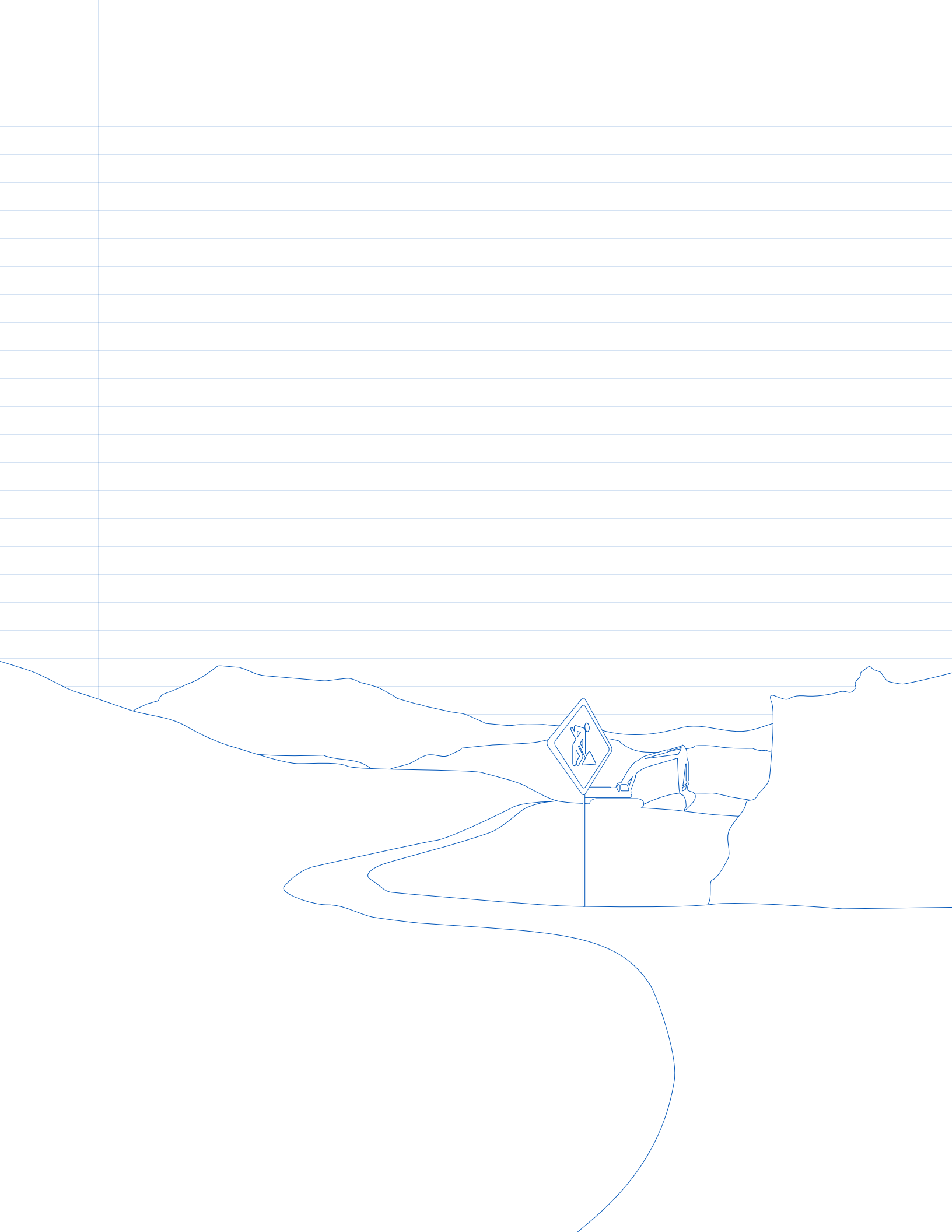


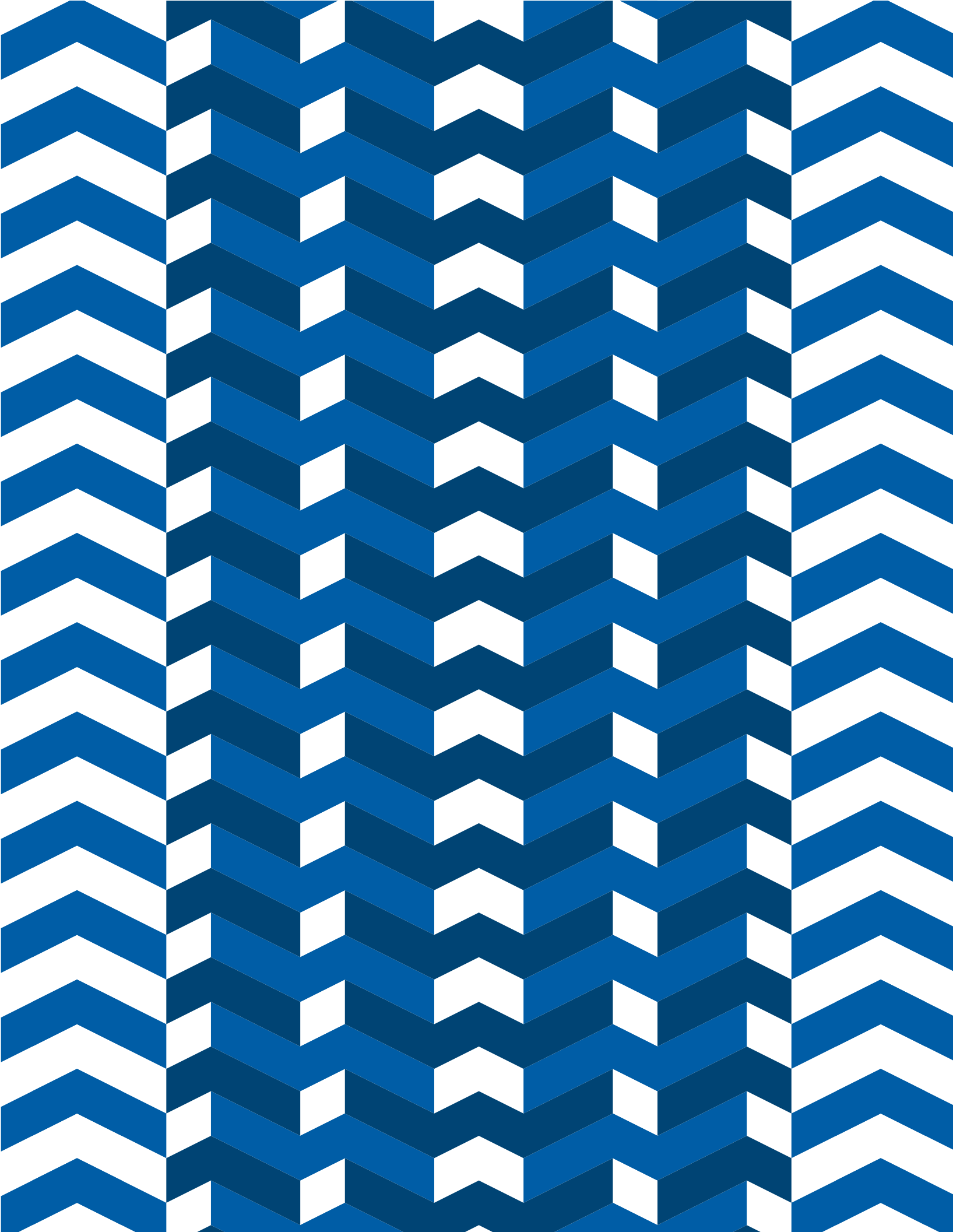
CAMSO HXD SMOOTH



CAMSO HXD CHEVRON







# TOUGH IS OUR WAY OF LIFE

